

June 2026

# Box River News

*Boxford • Edwardstone • Groton • Little Waldingfield • Newton Green*



Delivered free to every home in Boxford, Edwardstone, Groton, Little Waldingfield, Newton Green, Bower House Tye, Milden & White Street Green and available to residents in Acton, Assington, Brent Leigh, Great Waldingfield, Hadleigh, Kersey, Lavenham, Leavenheath, Nayland, Polstead, Shelley, Semer, Stoke-by-Nayland, Sudbury and parents of children at Boxford School.



# WHITE HART INN

BROAD STREET, BOXFORD

**EVERY TUESDAYS**  
12-2:30pm | 5pm-8pm

**£12.95**

ALL BURGERS SERVED WITH CHIPS AND SALAD.

**CHOICE 1**  
HOMEMADE BEEF, CHICKEN OR VEGGIE.

**CHOICE 2**  
(1 TOPPING)

- ★ JUST CHEESE
- ★ CHEDDAR & PEPPERCORN
- ★ BBQ BACON & CHEESE
- ★ STILTON
- ★ CHILLI CON CARNE
- ★ FRIED EGG

**EXTRAS**

- DOUBLE BURGER ..... £2
- HOMEMADE COLESLAW ..... £2
- HOMEMADE ONION RINGS ..... £3
- EXTRA TOPPINGS ..... £1
- ADD A DESSERT OR ICE CREAM ..... £5

GREAT BURGERS  
GREAT BEER  
GREAT TIMES

GOOD FOOD • GREAT COMPANY • MEMORABLE NIGHTS

**THE WHITE HART INN**  
*Harris & James Ice Cream*

**CHOICE 1**  
Tub or Cone?

**CHOICE 2**  
What Size?

**CHOICE 3**  
What Flavour?

CHILD £2.50 | SMALL £3.50 | MEDIUM £5.50 | LARGE £7.50

Hand crafted gelato  
MADE ON THE SUFFOLK AND NORFOLK BORDER  
with the finest ingredients.  
harrisandjames.com

**PIZZA NIGHT**  
— EVERY THURSDAY —  
AT THE WHITE HART INN, BOXFORD

FRESH STONE BAKED  
and made fresh to order!

EAT IN OR TAKE AWAY  
**£12 EACH**

CHOOSE FROM:

- Lion's Meat Feast
- Chorizo & Hot Honey
- BBQ Chicken & Bacon
- Ham & Pineapple
- Sun-Dried Tomato & Mozzarella
- Mushroom, Pepper & Red Onion
- Garlic Cheese Bread

DESSERT SPECIAL  
**Chocolate Hazelnut Pizza**  
WITH TWO SCOOPS OF VANILLA ICE CREAM

JOIN US THIS THURSDAY!  
GREAT PIZZA • GREAT PUB • GREAT COMPANY

THE WHITE HART INN

**FISH & CHIPS EVERY FRIDAY**

Battered Cod loin, Chips, Mushy Peas & Tartare Sauce  
£13.50

Eat in or Takeaway  
Pre booking is advised  
To place a order call  
01787 211764  
Served  
Lunch 12-2:30pm  
Evening 5-8pm

# New Bin Collections

*Three bins, three weeks & food waste collected every week.  
Here's what changes from the start of June*

From Monday 1st June, Babergh District Council is moving households onto a new collection rotation. All homes should now have received a new green-lidded bin for paper and card, as well as indoor and outdoor food waste caddies.

The black bin, blue bin and green-lidded bin will now be collected in turn over a three-week cycle. Food waste will be collected every week on the same day as your other collection, but will be collected by a separate vehicle.

Week Beginning	Collection
1st June	 Food waste & Black rubbish bin
8th June	 Food waste & Green-lidded recycling bin
15th June	 Food waste & Blue Recycling Bin
22nd June	 Food waste & Black rubbish bin
29th June	 Food waste & Green-lidded recycling bin

## What goes where

### Food waste caddy - collected weekly

Food waste goes in the caddy, including:

- Leftovers and plate scrapings
- Fruit and vegetable peelings
- Meat, fish and bones, cooked or raw
- Bread, pasta and rice
- Tea bags and coffee grounds
- Egg shells
- Cheese and dairy
- Food that is out of date or mouldy
- Pet food leftovers

No pet waste, packaging, oils, liquid fats, milk or other liquids.

Keeping food waste out of the black bin is likely to be the biggest week-to-week change for most households.

### Blue bin - mixed recycling

The blue bin is for clean, dry, loose recycling, including:

- Glass bottles and jars
- Plastic bottles
- Plastic pots, tubs and trays
- Plastic bags, film and wrapping
- Drinks cartons, such as Tetra Paks
- Food tins and drink cans
- Empty aerosols
- Foil and foil food trays

No Pyrex, drinking glasses, sheet glass, food waste, liquids or bagged recycling.

### Green-lidded bin - paper and card

The green-lidded bin is for clean, dry paper and cardboard, including:

- Newspapers and magazines
- Letters, envelopes and other paper
- Cardboard packaging
- Books, hardback and softback
- Shredded paper, wrapped in paper

Paper and cardboard with food, oil or grease on it like greasy pizza boxes should go in the black bin. Shiny or glittery wrapping paper should also go in the black bin.

### Black bin - general rubbish

The black bin is for household waste that cannot be recycled, including:

- Pet waste
- Nappies and sanitary waste
- Broken drinking glasses or Pyrex
- Non-recyclable wrapping paper
- Dirty or greasy paper and cardboard
- Unwearable clothes and textiles
- General household rubbish that cannot go in the other bins

Electrical items and batteries should never go in any kerbside bin. They need to be taken to a recycling point.

### Need to check something?

Babergh's recycling team can be contacted by phoning: **0300 1234 000, option 4**, by sending an email to: [recycling@baberghmidsuffolk.gov.uk](mailto:recycling@baberghmidsuffolk.gov.uk), or online at [www.babergh.gov.uk](http://www.babergh.gov.uk).

## Box River News

**Trudi Wild**  
Editor

**01787 210946**

[editor@boxrivernews.com](mailto:editor@boxrivernews.com)

Twin View, 18 Stone Street, Boxford CO10 5NR



[www.boxrivernews.com](http://www.boxrivernews.com)



[www.facebook.com/BoxRiverNews](https://www.facebook.com/BoxRiverNews)



[www.instagram.com/BoxRiverNews](https://www.instagram.com/BoxRiverNews)

**Disclaimer:** Whilst every care has been taken to ensure that the data in this publication is accurate, the Box River News nor its editorial contributors can accept, and hereby disclaim, any liability to any party for omissions resulting from negligence, accident or any other cause.

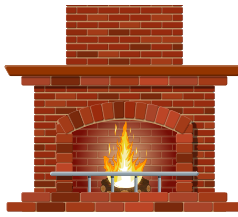
The Box River News does not officially endorse any advertising material included within this publication. All rights reserved. No parts of this publication may be reproduced without prior permission from Box River News.

**The copy deadline for the July issue is Monday 15th June at midday.**

# Newton Fireside Club

Lots to catch up on this time, as I missed last month's edition.

The club members had great fun decorating Easter eggs. Moira provided us with a range of paints and stickers - something for every ability. There were some amazing results; others, like mine, were a bit more basic!



The 31st March saw the eagerly awaited talk on medical detection dogs. The talk was presented by David Soames and Richard Rigby, who are volunteers with the Medical Detection Dogs Charity. They explained how they had become volunteers and the enthusiasm and joy they felt in the role was very evident. We were told about the history of the charity, how the dogs are trained and the conditions they can detect. The dogs are really amazing at detecting cancer and other conditions, and also warning their owners of possible seizures etc.

We all had lots of questions for David and Richard, who were very patient with us. If you would like to learn more about the charity, their website is [www.medicaldetectiondogs.org.uk](http://www.medicaldetectiondogs.org.uk)

This term commenced with a fish and chips lunch at Newton Golf Club. As ever, the food was delicious and we were very well looked after.

We next arranged a grape-tasting session in the village hall. The grapes



took the form of grape juice, white, red and rosé wine. Each group was given a score sheet to judge different aspects of the juice and wine. Unsurprisingly, it was quite a noisy afternoon, with some firm favourites and others that were not so pleasing on the palate.



On May 12th, 17 of us went on a guided walk of historic Sudbury. Many of us have lived in the area for years, but we all learnt so much. We were shown interesting buildings that we've probably walked past hundreds of times, and lanes and courtyards steeped in history. We heard about the famous people who had lived in or visited Sudbury, including Charles Dickens, who came to sort out the 'rotten borough' and its corrupt elections. We hope to arrange a similar tour in Lavenham.

There's still lots to look forward to between now and the end of July, so please do come and join us. You would be most welcome.

## SPRING & SUMMER PROGRAMME

- Tues 9th June Trip to Markshall
- Tues 23rd June Afternoon tea at Painters in Sudbury
- Tues 7th July TBC
- Sat 18th July Coffee Morning

All meetings are held in the village hall and start at 2pm unless otherwise stated, and anyone is welcome. Subs for members are £25 this term and must be paid in advance. This includes refreshments, activities and subsidised events.

Non-members are welcome to come along to any session. The fee will be between £5 and £10 depending on the activity. We are excited to say that we now have a card reader, so payments can be made by card.

New members are always welcome. Usually, the first session is free.

Please contact Moira on **01787 374652** or Sue on **07881 383 998** if you would like more details.

# Newton Village Hall Matters

**TREASURER:** Unfortunately, our treasurer, Fergie, resigned at our AGM for personal reasons. We cannot thank him enough for all his hard work. Not only did he carry out the usual treasurer responsibilities, but he also spent countless hours sorting out problems with utility bills to ensure we were paying the correct amount. Thank you again, Fergie.

We are very grateful to Richard Anthony, who has kindly agreed to step into the role, and we look forward to him joining the team.

**TRUSTEE:** Sadly, after many years of supporting the village hall, Joan Linley has stepped down as a trustee. We would like to thank her for all her hard work over the years. She will be sorely missed.

**QUIZ:** A village quiz was held in the hall on Saturday 25th March. We had a new quizmaster, Steve, and scorer, Elaine, who are experienced quizzers. The evening was very well attended, and everybody enjoyed the new format, including a game of 'Play Your Cards Right' with a cash prize. There was the usual ploughman's supper and a raffle. A total of £630 was raised to be divided between the village hall and the church. Thank you to Steve and Elaine, and to everyone who supported the event.



**Bookings:** The number for bookings is **07955 199 000**. Please visit [www.yourhall.co.uk/hall/newton-green](http://www.yourhall.co.uk/hall/newton-green) where you will find a detailed description of the hall, along with photos and a diary of bookings.

## Next Coffee mornings:

- Saturday 20th June - Newton Trust
- Saturday 18th July - Fireside Club
- Saturday 26th Sept - Macmillan
- Saturday 24th Oct - Newton Charities
- Saturday 21st Nov - Village Hall

All coffee mornings are in the village hall and start at 10am. Donations for raffles, cake stalls and good-quality bric-a-brac would be much appreciated. Raffles are usually called at about 11.15am. Please do come and support these charities and village organisations.

# BOXFORD BOUNTY

The Boxford Bounty would like to congratulate the following winners of the April 2026 draw, drawn at The Fleece, Boxford on Sat 9th May 2026:

March - April 2026		
1 <sup>st</sup>	£250	Mr D Warren
2 <sup>nd</sup>	£125	Mr D Impett
3 <sup>rd</sup>	£75	Mrs P Ware
4 <sup>th</sup>	£50	Mrs A Barlow

Boxford Community Council

Registered with Babergh District Council under Schedule 11 to the Gambling Act 2005. Registered Charity No 304862

## Newton Open Gardens 2027

There is nothing like planning ahead, so although there will be no Newton Open Gardens this year, we are determined to go ahead in 2027. For this to happen, we require 15-20 gardens to open.

So, as you sit in your garden over the next few months admiring your handiwork, please do think about how satisfying it would be to share your garden with others. We are not looking for Chelsea Flower Show standard, as visitors really love to admire gardens of all styles, shapes and sizes.

We would be very pleased to hear from past and future gardeners who are willing to open in June 2027.

If you would like further information or would like to offer your garden, please contact Sue and Paul on 07881 383998 or [sue\\_presland@hotmail.com](mailto:sue_presland@hotmail.com).

We will offer as much support as possible and can put you in touch with villagers who opened last year to hear how it went.

Many thanks and we look forward to hearing from you.

## Boxford Village Hall Treasurer Wanted

Boxford Village Hall Committee is looking for a new treasurer to join our friendly committee.

We would like to say a huge thank you to our outgoing treasurer Joe Barrett for his many years of service and for all he has done to support the village hall and our community.

The committee meets monthly, and there are lots of exciting things happening this year, including our centenary celebrations. It's a great opportunity to be part of a team focused on providing a welcoming hub for the whole community.

If you are interested, or would simply like an informal chat about the role, please contact the chair: [nick@boxfordvillagehall.co.uk](mailto:nick@boxfordvillagehall.co.uk).



... THE ...  
**WHITE HORSE INN**  
... EDWARDSTONE ...

Wide selection of drinks from independent UK producers  
Craft beers, real ales, ciders, wines & spirits.  
Home of Little Earth Project

*June*

**Acoustic Night - From 7pm**  
Wednesday, May 27th  
Wednesday, June 10th  
Wednesday, June 24th

Now Open 7 Days a Week!  
Mon & Tues 4pm-9pm (drinks only)  
Wed - Sun From 12pm

**May Bank Holiday Weekend - May 22<sup>nd</sup> - 25<sup>th</sup>**  
Saturday, May 23<sup>rd</sup> - Jonny Drop DJ

**Cottages & Campsite Bookings**  
Bookings open through Summer 2026 via our website!

**Sourdough Pizzas & Boards & Bites Menu**  
Boards: Wed-Sat 12-8, Sun 12-4  
Pizzas: Sit in/Takeaway - Thurs 5-8pm, Fri & Sat 12-8, Sun 12-4  
**Thursday Nights Pizza & a Pint for £15 (5-8pm)**

**Little Earth Fest 2026 - JULY 3<sup>rd</sup> & 4<sup>th</sup>**  
Annual mixed fermentation fest! Street food, beer, music!

**Street Food**  
Follow us on Facebook/Instagram for weekly updates!

Wagyu Burgers - Friday June 5<sup>th</sup>, 12<sup>th</sup>, 26<sup>th</sup>  
Tasty Turk - Sat June 13<sup>th</sup>  
Noodle & Dumpling - Friday, June 19<sup>th</sup>  
Suffolk Spice Fusion - Sat June 20<sup>th</sup>  
My Thai Chef - Saturday, June 27<sup>th</sup>  
Savannah Smoke - Sunday June 28<sup>th</sup>

 @edwardstonewh [www.edwardstonewhitehorse.co.uk](http://www.edwardstonewhitehorse.co.uk)



**sunflowers childcare**

An independent setting  
within Boxford Primary school

**We offer term wrap-around care and Early Education for children aged 20 months -12 years of age**

**Term time opening hours:**  
Monday - Thursday: 7.30am - 6.00pm  
Friday: 7.30am - 5.00pm

Set Pre-school sessions from 9.00am - 3.30pm

For school aged children, we deliver to Boxford school from Breakfast club and collect directly from the school.

**School Holiday clubs for children 20m - 12 years:**  
(preschool children need to be in attendance at Sunflowers)  
Monday - Thursday: 8.30am - 3.30pm

**15 and 30 hours Early years government entitlement sessions available**

The Cabin, Stonestreet Road, Boxford, Suffolk. CO10 5NP

**CALL US: 01787 211363**

Email: [info@sunflowers-childcare.co.uk](mailto:info@sunflowers-childcare.co.uk)  
Web: [www.sunflowers-childcare.co.uk](http://www.sunflowers-childcare.co.uk)



# The Butcher's Wife

## *Answers on a postcard*

I've previously shared a list of things I don't understand - the stock market, interest rates, fingerprints, to name a few. I spend so much time giving the Butcher a hard time that I thought it was only fair to turn the spotlight on myself for once. So, here are a few more things that make my brain hurt.

**Accents** - why are there so many accents when we are all speaking the same language? In the UK alone there are dozens of distinct accents and hundreds of variations. That's before I even get started on people like me who have weird mixed accents! It doesn't make sense to me that people from Suffolk sound so different to people from Essex when they are right next door to each other. And don't even get me started on languages! How did we translate languages when we didn't speak the same language in the first place?!

**Magic tricks** - I hate magic tricks. I'm not referring to a sleight of hand card trick - I can normally work those ones out. I mean the 'you've written on a card and then it turns up in a stranger's mouth 20 feet away' type of trick. Or when the magician knows the number you were thinking of and, guess what, he had it tattooed on his arm the day

before. How did a member of the audience disappear from one box on the stage and then appear in another box on the opposite side of the stage? It makes me angry that I don't know how they do it.

**Cruise ships** - how can a cruise ship float but the teeny tiny toe ring that I dropped while swimming in Bondi in 2013 is still at the bottom of the ocean? This isn't limited to just cruise ships but any boat in general.

*"It makes me angry that I don't know how they do it."*

**Keys** - the average house would have two keys - front and back door. Now think about how many houses there are in the world. You're telling me that they all have different keys? This can't be possible. There can't be that many ways to cut a key. There must be people in the world who have the same key.

### **Hair growth**

- if I never got another haircut, the hair on my head would just keep growing, but my eyebrows, for example, stop growing. How does that hair know when to stop growing, and why is there always a rogue hair on my chin that would keep growing until the end of time?



**Weather** - what is the 'feels like' temperature about? If my weather app says today is going to be 15 degrees but the wind is making it feel like 8 degrees, then surely it's 8 degrees? How can it be one temperature but feel like another temperature, and how do they measure the original temperature without the wind?

**Braille** - how do blind people know where to find the braille to read it? No elaboration needed; it blows my mind.

Feel free to shed any light on any of the above; I can't guarantee that it'll help my understanding though!

## One-Pan Sausage & Rice

*This month's recipe is the sort of easy, comforting dinner that works well on a busy evening. Everything cooks together in one pan, with sausages, rice, vegetables and mozzarella making a hearty meal with very little fuss - and, even better, very little washing up.*

### Ingredients (serves 4)

- 5 sausages, sliced
- 400g rice
- 1 onion, chopped
- 2 cloves garlic, chopped
- 1 chopped tomato
- 1/2 green pepper
- 1 can sweetcorn
- Black olives (to taste)
- Cubes of mozzarella cheese
- Olive oil, warm water, and salt

### Method

1. Sauté the chopped onion and garlic in olive oil over medium heat.
2. Add the sliced sausages and mix.
3. Stir in the chopped tomato, green pepper, sweetcorn, and olives.
4. Add the rice and salt, stirring until the rice is lightly fried.
5. Pour in enough warm water to cover the mixture. Cover and let it cook for about 20 minutes until the rice is tender.
6. Drop in mozzarella cheese cubes, cover the pot again, and let the cheese melt before serving.

Beautiful jewellery made from silver, gold and platinum.  
Bespoke service.

01787 210251  
info@willbishop.co.uk | www.willbishop.co.uk

**N L ADAMS**  
**PLASTERING SERVICES**

Free Quotations  
Find us on Facebook / Google

☎ **07908 876 873** → 📱  
✉ [nladams.services@gmail.com](mailto:nladams.services@gmail.com)

AlexanderSmithChiropractor  
www.alexandersmithchiropractor.co.uk 01787 207107

**Lower back pain?  
Sciatica or  
neck pain?**

Chiropractic care based in Sudbury  
can help you get back to normal.

Providing effective relief for:

- Low back pain
- Mid and upper back pain
- Neck pain and headaches
- Shoulder and knee pain
- Muscle spasm

A range of techniques tailored to your needs are used to help you get back to your best.  
**FREE PARKING - EVENING AND SATURDAY APPOINTMENTS.**

To book an appointment call  
**01787 207107**

**THE CURTAIN EXCHANGE**

Famous for our top-quality secondhand curtains.  
We also make curtains and blinds to order  
- free quotes available.

Open Tuesday, Wednesday & Thursday 10-4pm

[www.thecurtainexchange.co.uk](http://www.thecurtainexchange.co.uk)  
01376 561 199

Unit 3, Crestland House,  
Bull Lane Industrial Estate, Acton, CO10 0BD

**A. LEEDER**  
**Family Butcher**

Free local delivery\*

- Local British Beef, Pork, Lamb & Chicken
- Fresh bread (from Sparling Faiers, Lavenham)
- Local free range eggs
- Fresh vegetables
- Variety of cheeses
- Homemade sausage rolls, pasties & scotch eggs
- Locally sourced honey
- Condiments, flour, oils and much more!

\*within 7 mile radius of Boxford on orders over £25  
£3 delivery charge for orders under £25 or over 7 miles

Open Tues-Fri: 7am - 5pm, Sat: 7am-1pm  
33 Swan Street, Boxford  
Tel: 01787 210267  
[www.aleederbutchers.co.uk](http://www.aleederbutchers.co.uk)

## Reflections from the Ministry Team

Dear Friends,

The beautiful month of June is here - summertime, with sunny days and long, light evenings. Time to get outdoors as much as possible, enjoy our gardens and get out the BBQ. Many of us are planning our summer holidays and looking forward to relaxing with family and friends.

In Church we enter a quieter period after the celebrations of Easter, Pentecost (Whit Sunday) and Trinity Sunday. This is called Ordinary Time (from the Latin *tempus ordinarium*, meaning measured, numbered or ordered time). It means that through the summer we have no major festivals to observe. Instead, we go through around 25 Sundays after Trinity until we reach All Saints' Day and Advent once again in the autumn.

This reminded me of an interesting poem by John Meade Falkner (1858-1932) called *After Trinity*. Here are some lines from it:

*We have done with dogma and divinity,  
Easter and Whitsun past,  
The long, long Sundays after Trinity,  
Are with us at last.*

But Ordinary Time is far from ordinary or humdrum. The liturgical colour is green, the colour of growth, and these Sundays give us an opportunity to concentrate on our spiritual growth through learning and reflection on the Gospel stories and the New Testament letters. It is always wonderful to celebrate the high points of festivals, but our faith also needs the regular Sunday-by-Sunday prayer and worship. It is during these quieter times that we get to know Jesus and each other more deeply. If you are seeking to understand more about the Christian faith or have questions about why the Church is the way it is, then come and join us on Sunday mornings over the summer and see us in our 'ordinary' mode!

The five churches of our Benefice continue to offer worship regularly and are always ready to welcome you to any of our services. We still await a new Rector but are hopeful that someone will feel the call to come to us very soon. The Ministry Team are very grateful to all our churchwardens, PCCs and regular worshippers who work hard to keep everything going in the Benefice. All their quiet service goes on mostly unnoticed but is essential in keeping the Church's presence alive and active in our villages.

All of our parishes in the Benefice have beautiful ancient churches that are a joy to be in, and they are all open for private prayer and devotion every day. Do take the opportunity over the summer to pop into our Benefice churches and enjoy their beauty and serenity. On a hot summer's day it is bliss to step inside a cool church and see the sunlight streaming through stained-glass windows. There is so much history in our buildings, so much to learn about our communities in the past. If you have not been inside some of our churches, I encourage you to visit them this summer and take your children and grandchildren with you. These buildings are our children's heritage, and their future will depend on our communities' love for them.

I wish you a summertime full of sunshine and adventure!

*With love in Christ,  
Revd Diana*



## June

*Dates for your diary*

**Tuesday 2nd, 10am**

*Drop in for Coffee, Mary's House*

**Friday 5th, 10:30am**

*Coffee Morning, St Lawrence's, Lt Waldingfield*

**Saturday 6th, 7pm**

*Musicology Concert, St Mary the Virgin, Edwardstone*

**Sunday 7th, 11am-4pm**

*Boxford Open Gardens, Boxford & Edwardstone*

**Tuesday, 9th 10am**

*Drop in for Coffee, Mary's House*

**Tuesday 16th, 10am**

*Drop in for Coffee, Mary's House*

**Wednesday 17th, 10am**

*Coffee Morning, All Saints', Newton Green*

**Saturday 20th, 10am**

*Coffee Morning, St Mary's, Boxford*

**Sunday 21st, 11am-4pm**

*Little Waldingfield Open Gardens, Little Waldingfield*

**Tuesday 23rd, 10am**

*Drop in for Coffee, Mary's House*

**Sunday 27th, 6pm**

*Organ Recital with Tom Cogan, St Mary's, Boxford*

**Tuesday 30th, 10am**

*Drop in for Coffee, Mary's House*

**ST MARY'S CHURCH BOXFORD**

**SATURDAY 27<sup>th</sup> June**

**6pm – 7pm**

**FREE ADMISSION**



**TOM COGAN**

**Organ**



Enjoy a glass of wine after the Recital.  
**RETIRING COLLECTION IN AID OF  
ST MARY'S CHURCH, ORGAN FUND.**

# Refine ★ Renew ★ Reveal



## The ultimate skin reset starts here...

Have you heard about our advanced bespoke facial treatments with micro-needling?

★ **Dermal Rejuvenation** ★ A replenishing facial treatment with powerful growth-factor ingredients.

★ **Vitamin Energiser** ★ A super-charged Vitamin C facial treatment for the ultimate skin pick-me-up.

Both treatments include everything you'd expect from a bespoke facial PLUS a detoxifying drainage massage, Dermalux light therapy and **micro-needling**, to reduce the appearance of fine lines, improve the appearance of scars and sun damage and give skin a healthy-looking, radiant glow.

**And this month, you save £50!!**

## June Offer

Get either of our classic micro-needling facial treatments for just £100 (usually £150)\*

Call 01787 211 000 for more info

\* Offer valid once per person until 30/06/2026.

Suffolk Medical & Beauty Clinic, 6 Broad Street, Boxford.

Tel: 01787 211 000 ★ [www.suffolkmedicalclinic.co.uk](http://www.suffolkmedicalclinic.co.uk)



## Service Schedule for June 2026

<b>Wednesday 3<sup>rd</sup> June</b>	10:00	Communion & Coffee	Mary's House, Boxford
<b>Sunday 7<sup>th</sup> June</b> <i>Trinity 1</i>	09:30	Sunday Eucharist	St Lawrence's, Lt Waldingfield
	11:00	Sunday Eucharist	St Mary's, Boxford
<b>Wednesday 10<sup>th</sup> June</b>	10:00	Communion & Coffee	Mary's House, Boxford
<b>Sunday 14<sup>th</sup> June</b> <i>Trinity 2</i>	09:30	Sunday Eucharist	St Bartholomew's, Groton
	11:00	Sunday Eucharist with Choir	St Mary's, Boxford
	17:00	BCP Evensong	St Mary's, Boxford
<b>Wednesday 17<sup>th</sup> June</b>	10:00	Communion & Coffee	Mary's House, Boxford
<b>Sunday 21<sup>st</sup> June</b> <i>Trinity 3</i> <i>Father's Day</i>	09:30	Sunday Eucharist	St Mary the Virgin, Edwardstone
	11:00	Sunday Eucharist with Choir	St Mary's, Boxford
<b>Wednesday 24<sup>th</sup> June</b> <i>Birth of John the Baptist</i>	10:00	Communion & Coffee	Mary's House, Boxford
<b>Sunday 28<sup>th</sup> June</b> <i>Trinity 4</i>	11:00	Sunday Eucharist	All Saints', Newton Green
	11:00	Sunday Eucharist	St Mary's, Boxford

All our churches across the Benefice are **OPEN EVERY DAY** for Private Prayer.

If you need support, please contact the Benefice Office in the first instance, all enquiries will be treated in confidence and passed on to the appropriate person.

**We are urgently looking for a**  
**VOLUNTARY TREASURER AT**  
**ALL SAINTS' CHURCH, NEWTON**

Could you help support the life of our village church?

This voluntary role is an important part of our church's life, ensuring our finances are well kept, transparent and managed. You don't need to join our PCC or even live in Newton. The role includes: -

- Keeping clear and accurate online/computerised financial records
- Managing online payments
- Preparing simple reports for PCC meetings

What we're looking for: -

You don't need to be an accountant – just someone organised, trustworthy and comfortable with basic numbers. Training and a full handover will be provided, and the PCC will support you every step of the way.



**Please contact the Benefice Office for further information**

## News from the Benefice During the Interregnum

We continue to journey through this period of interregnum together. We are deeply grateful for the patience, goodwill and prayerful support shown across all our churches as we work towards finding the right rector to lead us into the next chapter of our benefice's life. Following our second round of advertising, we are pleased to share that interviews will be taking place at the end of June, subject to suitable applicants. This is an important step, and we ask you to hold the candidates, the interview panel and our benefice communities in your prayers.

Please pray that we may discern wisely and that God will guide the right person to this post - someone who will help us grow in faith, deepen our worship and strengthen our shared ministry across the Box River Benefice.

In the meantime, our Ministry Team, Rural Dean, Churchwardens, PCC members and our many volunteers continue to ensure that worship, pastoral care and the daily life of our churches remain steady and well supported. Thank you for everything you do to help one another during this time. May we continue to trust in God's timing and remain hopeful as we look ahead.

## June Highlights - Music & Open Gardens

June in our benefice is a month filled with colour, creativity and community spirit. As gardens reach their early summer best and our churches host uplifting musical events, there are many opportunities to gather, explore and enjoy the beauty of our villages.

### Musicology

Edwardstone Church, **Saturday 6th June, 7pm**  
A relaxed evening of popular tunes from The Beatles, The Carpenters, Flanders & Swann and Cole Porter. Tickets £10, including wine and canapés, in support of Edwardstone Church.

### Boxford Open Gardens

**Sunday 7th June, 11am-4pm**  
Explore beautiful gardens in Boxford and Edwardstone, enjoy the children's trail and stop for teas, coffees and cakes. Tickets £6 for adults, under 16s free, available at the church ticket stall or your first garden. More information from Audrey Zuck at [audrey@a2zrkservices.com](mailto:audrey@a2zrkservices.com).

### Little Waldingfield Open Gardens

**Sunday 21st June, 11am-4pm**  
Wander through gardens open throughout the village, with refreshments, plants and produce, and parking on the playing field. Admission £6 per adult, under 16s free, with programmes from the parish room. All proceeds support St Lawrence Church.

### Organ Recital with Tom Cogan

St Mary's, Boxford, **Saturday 27th June, 6-7pm**  
A free recital followed by a glass of wine, with a retiring collection for the St Mary's Organ Fund - a wonderful way to close a vibrant month.

*An Evening of*  
**POPULAR TUNES**  
*with Musicology*

*Edwardstone Church Concert*  
**Saturday, 6th June 2026 | 7:00 PM**

*featuring music from:*  
The Beatles, The Carpenters, Flanders & Swann, Cole Porter

Tickets: £10 - Includes a glass of wine & canapés

☎ Marlene Clarke: 07884 312953  
☎ Ineke Morris: 07765 098864  
*All proceeds go to support Edwardstone Church*

**BOX RIVER BENEFICE**  
**COFFEE MORNINGS**  
**IN**  
**JUNE 2026**

DROP IN FOR COFFEE AT MARY'S HOUSE, SWAN STREET, BOXFORD  
BETWEEN 10.00 AND 12.00 PM  
EVERY TUESDAY

FRIDAY, 5<sup>TH</sup> JUNE AT 10.30 AM  
COFFEE MORNING  
AT  
ST LAWRENCE'S, LT WALDINGFIELD

WEDNESDAY, 17<sup>TH</sup> JUNE AT 10.00 AM  
COFFEE MORNING  
AT  
ALL SAINTS', NEWTON

SATURDAY, 20<sup>TH</sup> JUNE AT 10.00 AM  
COFFEE MORNING  
AT  
ST MARY'S, BOXFORD

## Contact Information

**Benefice Office:**  
Mary's House, 5 Swan Street, Boxford, CO10 5NZ

**01787 828046**

email: [boxriverbenefice@gmail.com](mailto:boxriverbenefice@gmail.com)

## First Boxford Scout Council Annual General Meeting

**Saturday 6th June 2026 at 3pm**

Boxford Spinney, Fen Street, Boxford, Sudbury, Suffolk.  
CO10 5HL

The trustees of 1st Boxford Scout Council are delighted to invite you to this year's Annual General Meeting.

We warmly welcome everyone whose children are involved in scouting, or those with a vested interest, to join us as we address the formal business of the year. This is a great opportunity to get a sense of what goes on behind the scenes in keeping all of our sections afloat and to support those who deliver this invaluable work.

Anybody who is interested in joining the voluntary leadership or committee team is especially welcome.

*David Talbot Clarke*  
Group Secretary

## Boxford Spinney Scout & Guide HQ & Campsite Annual General Meeting

**Wednesday 24th June at 7:30pm.**

Boxford Spinney, Fen Street, Boxford, Sudbury, Suffolk.  
CO10 5HL

The meeting will include the presentation of annual accounts and the election of officers to the trustee board.

Nominations are currently sought for the position of chair. The ideal candidate will be a natural team builder with experience in property management. Knowledge of scouting and guiding is desirable, but not essential.

The chair will be expected to:

- Chair Spinney trustee board meetings - approximately three times a year, plus the AGM
- Co-ordinate the activity of the trustees and supporting voluntary helpers
- Lead the recruitment of trustee board members, where required
- Assist in identifying maintenance and improvement tasks for the facilities at Boxford Spinney
- Assist in recruiting and co-ordinating suitable people, including volunteers and tradespeople, to carry out such tasks

Further information is available from Mark Miller on  
**07534 953843** or [treasurer.boxfordspinney@gmail.com](mailto:treasurer.boxfordspinney@gmail.com).

## Little Waldingfield Pop-Up Pubs

Our next 'Pop-Up Pub' nights will be on **Friday 26th June** and **Friday 31st July**.

These relaxed and friendly events run from 6:30pm - 10:30pm in the beautiful setting of the pavilion at the Little Waldingfield playing field, and everyone is welcome to join us for an evening of great company and a range of reasonably-priced drinks (both alcoholic and non) watching the sun set over the countryside.

East of England  
charity

EEAST  
Heart

NHS  
East of England  
Ambulance Service  
2023 Trust

Do you know what to do in a  
medical emergency?

Learn free lifesaving skills today!

Come along to our CPR & AED  
(automated external defibrillator)  
awareness course run  
by EEAST Heart.

Free to attend -  
suggested donation  
£5 - £10 per person

Thursday 11th June  
7pm

The Fleece, Boxford

email:  
[jenny@suffolkmedicalclinic.co.uk](mailto:jenny@suffolkmedicalclinic.co.uk) to reserve a space

Registered Charity No: 1047987

THE FLEECE HOTEL

Charity Quiz

Wed 17th	Jun	8 PM
Wed 15th	Jul	8 PM
Wed 12th	Aug	8 PM
Wed 16th	Sep	8 PM
Wed 14th	Oct	8 PM
Wed 11th	Nov	8 PM
Wed 9th	Dec	8 PM

Free to enter, please donate on the night to the  
charity of the month!

Up to 6 per team | 01787 211 818 to reserve a table

## GROTON HISTORY SOCIETY

JUNE

# 26



## 'Victoria & Abdul'

### Shabrani Basu

Journalist and author of the book, that was adapted for the 2017 film. She often appears on BBC, ITV and C4 to comment on Indian History and Empire.

@ Groton Village Hall: 19:30 - 21:30

£5 entry, includes Glass of Wine ( Students free )



## Fleece Jazz at Stoke-by-Nayland Hotel presents

### Theo Travis's Double Talk Band

Wednesday 10th June 2026 8pm - Tickets: £20



To celebrate the 30th anniversary of the classic "Secret Island" album, international sax legend Theo Travis and his band Double Talk return to Fleece Jazz.

Theo Travis – Saxes and flute  
Mike Outram – Guitar  
Pete Whittaker – Organ  
Nic France – Drums

### The Gaz Hughes Trio

Wednesday 24th June 2026 8pm - Tickets: £20



"They rarely deliver anything less than excellence and today topped just about everything that had preceded it. I feel sad for the squares who weren't there"  
BEBOP SPOKEN HERE

"Old school Jazz for the 21st Century"  
DALE BASSETT

Gaz Hughes – Drums  
Andrzej Baranek – Piano  
Gavin Barras – Bass

Stoke by Nayland Hotel, Keepers Lane, Leavenheath CO6 4PZ

Ample parking: fully accessible. Directions: [www.fleecejazz.org.uk](http://www.fleecejazz.org.uk)

Tickets: 01787 210796 or via [WeGotTickets](http://WeGotTickets.com) (booking fee applies); or on the door (cash or cheque only; sorry no debit/credit cards)

\*Friends of Fleece Jazz discount

SPECIAL OFFER: A double room with breakfast and two tickets from £149 (subject to availability) Phone: 01206 262836

## THE BOXFORD SOCIETY

# OLD PICTURE SHOW

## FROM THE ARCHIVE

FRIDAY 12<sup>TH</sup> JUNE 2026 - 7.30PM

BOXFORD VILLAGE HALL

### PART 2: SWAN ST, CHURCH ST, SCHOOL HILL & STONE ST



Join Roger Loose for a fascinating look at more old photographs and maps of these ancient parts of our village. He will explain the history of these streets, shops and buildings, and the people who lived there in the last century.

Don't miss this one-off opportunity to see some of the Boxford Society Archive on screen.

Entrance is free to Boxford Society members and just £5 at the door for visitors.



**1926**



**2026**

**GROTON VILLAGE HALL**

## **CENTENARY CELEBRATION**

**Sunday 14<sup>th</sup> June 2026**  
**3pm – 5pm**

To all Groton residents and friends:

**You are warmly invited to the village  
hall's 100<sup>th</sup> 'birthday' party!**

- ❖ Traditional high tea ❖
- ❖ Variety of hot and cold drinks ❖
- ❖ Children's activities ❖
- ❖ Special display of the hall's history ❖

*Please contact Joanna (07845 940008)  
or Jayne (01787 211360) if you plan to attend*

**BOXFORD GARDENING SOCIETY**

# HOSTAS

**A fresh perspective...**

Melanie Collins of Mickfield Hostas,  
the largest National Collection of Hostas in the UK




**Tuesday 2nd June 7.30pm**  
at Boxford Village Hall



# Boxford Open Gardens 2026



Opening Times	Tickets	Things to Do
Sunday 7th June 11am - 4pm	£6 / free for under 16s Purchase at the main ticket stall at the Church, or at the first garden you visit.	<ul style="list-style-type: none"> <li>Open gardens in Boxford and Edwardstone</li> <li>New gardens to see</li> <li>Children's Trail</li> <li>Teas, coffees, cakes</li> </ul>
<b>More Information</b>		
Audrey Zack audrey@a2zriskservices.com		

## LITTLE WALDINGFIELD OPEN GARDENS

**Sunday 21st June 2026**

**11am to 4pm**

Admission £6 per Adult

Includes programme with map from Parish Room, Church Road

Children under 16 Free

Refreshments  
Plants and Produce  
Parking on Playing Field

Proceeds go to our St. Lawrence Church




# Chelsworth Open Gardens

57th Year **2026**

**Sunday 28 June**  
**11.00 to 5.00**

Adults £7.50 - Children and Parking Free

20 + Garden Open (TBC) - Refreshments - Gardener's Market

Chelsworth on the B1115 between Sudbury and Stowmarket  
IP7 7HU

Admission by programme obtained from car parks on the day

**Coaches booked in advance welcome**

WiFi can be problematic so cash payment would be appreciated

Proceeds to All Saints Church Chelsworth OX879D [www.chelsworth.onesuffolk.net](http://www.chelsworth.onesuffolk.net)

**FREE  
PARKING**

**DOGS  
WELCOME**



**Saturday June 13th 2026  
10am – 5pm**

***Kentwell Hall***

**LONG MELFORD • SUFFOLK • CO10 9BA**

**Chefs demos • Wine tasting • BBQ demos  
• Free kids activities • Street food • Bars**

**TICKETS AVAILABLE VIA OUR WEBSITE  
WWW.TASTEOFEASTANGLIA.CO.UK**



# Could you be the next FoBs Chair?

**A small role that makes a BIG difference**

Our team raises vital funds that **enrich school life** and create amazing opportunities for all our children

**Our school**  
**Our children**  
**Our community**  
**We need your help!**

**What you will get in return:**

- You will be part of a ongoing supportive team that have been part of FoBs for many years
- Its incredibly rewarding to see the impact we make together
- Knowing you have helped create fun events and smiles for our children is priceless!

**Interested, curious – Lets chat!**

Please get in touch with the FoBs team or school [talktofobs@gmail.com](mailto:talktofobs@gmail.com)



**What makes a fantastic Chair?**

**Organised & Reliable**  
 Helps co-ordinate the team and acts as the main link between the team and the school

**Team player & Passionate about our children**  
 You care about our school community and want to be part of something brilliant

**A great communicator**  
 You explain things clearly and work well with the team, and school

**Transparent & Trustworthy**  
 Supporting the Treasurer and being a fair representative of the school

charity No: 1007332

# JOIN US FOR THE "FOBS GONE BARKING" DOG SHOW

**Saturday 13th June**  
**Entries taken from 12.30pm:**  
**Competitions - 1pm-3.30pm**  
**Boxford Primary School playground**  
 Stone Street Road, Boxford, CO10 5NP

**A paw-some event for dog lovers and families**

**Competitions - with prizes!**  
 - £2 per entry (or £10 for 6)

Puppy Love - for pups under 2  
 Golden Oldie - for those over 8

Fine Pedigree  
 Fancy Dress  
 Great Cross Breed  
 Child's Best Friend  
 Best Condition  
 Best Trick

- Drinks & cake stall
- Dog treat stall
- Hand crafted jewellery
- Plus more to come!

**ALL PROCEEDS WILL GO TOWARDS PROJECTS FOR ENHANCING BOXFORD PRIMARY SCHOOL, YOUR PARTICIPATION WILL MAKE A REAL DIFFERENCE!**



**FOUNDED 1923**

# BOXFORD & DISTRICT BOWLS CLUB

**HOME MADE**

# Cake Sale

**Saturday 13th June 2026**

**11am to 1pm**  
**Bowling Green, Boxford - behind The Fleece**

**Hot drinks available · Eat in or take away**

**Proceeds to BS&DBC a Community Amateur Sports Club**



JOIN US FOR A

# Tea Dance

Enjoy a delightful afternoon of dancing  
and conversation with music from  
'The Three Chordettes', accompanied by  
a traditional afternoon tea

**04 JULY 2026**

**3 - 5PM**

**BOXFORD VILLAGE HALL**

Tickets £7.50  
on sale from 7th April

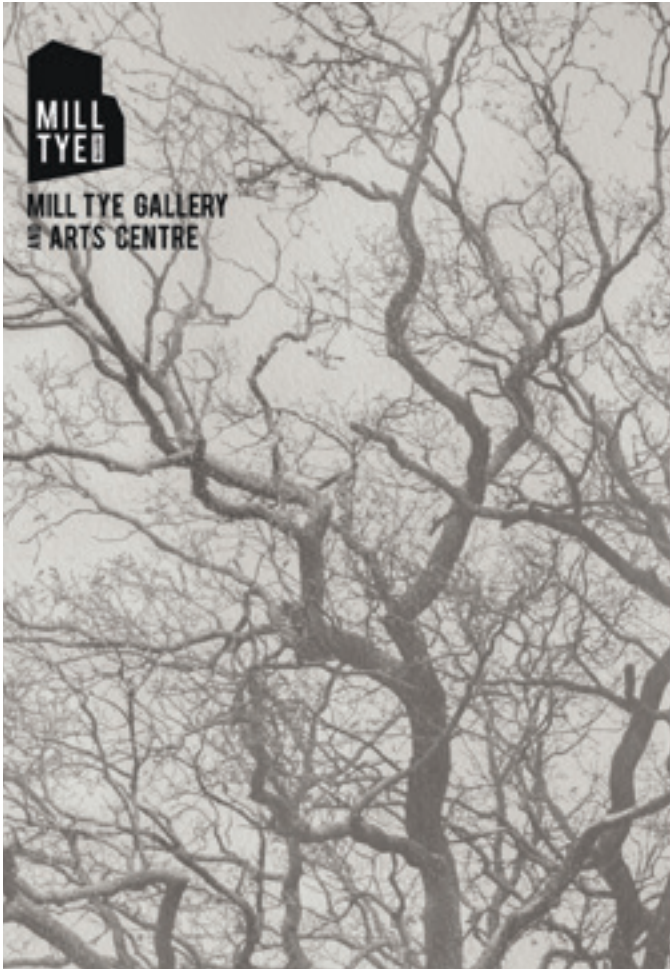
For more information contact  
[info@boxfordvillagehall.co.uk](mailto:info@boxfordvillagehall.co.uk)

**BOXFORD**  
1926-2026

**CENTENARY**

  
**VILLAGE HALL**





Mill Tye Gallery and Arts Centre  
**Rowan Collinson**  
**A Field Study:**  
**documenting four seasons**  
**June 2026/**

Rowan Collinson considers ecology, place and the quiet transformation of the natural world through sustainable photography.

**JUNE ARTIST IN RESIDENCE**

To find out more and to register your interest go to:  
[www.milltyegallery.co.uk/exhibitions](http://www.milltyegallery.co.uk/exhibitions)

Mill Tye Gallery and Arts Centre  
 3 Cornard Mills, Mill Tye, Great Cornard, Sudbury, CO10 0GW  
 Open: Thursday to Sunday 10:30am to 4pm. Free Admission.



**MACBETH**

At Tendring Hall Estate, Stoke-By-Nayland  
 Friday 24th July, 7pm

Join the HandleBards for a lively open-air performance of Shakespeare's Macbeth in the Walled Garden of Tendring Park

Doors open at 5.45pm  
 Bar and Pizza available or bring a picnic

Book tickets via [www.handlebards.com](http://www.handlebards.com) or scan

**MILDEN FINE ART EXHIBITION**

PREVIEW FRIDAY 3RD JULY 6.00PM TO 8.00PM  
 with canapés and refreshments

OPEN FOR GENERAL VIEWING SATURDAY 4TH AND  
 SUNDAY 5TH JULY 10.30AM TO 4.30PM

Featuring works by: David Porteous-Butler, Carol Sugden, Dominic Butler, Diana Swansborough, Sara Godfrey, Sandy De'Ath, Jan Jamieson, Amy Ditheridge, Aurora Toplis, Julie Cooke, Mark Isahak

AT ST PETER'S CHURCH, CHURCH ROAD, MILDEN IP7 7AG

FREE ENTRY — NO OBLIGATION TO BUY

WORKS ARE FOR SALE IN THIS FUNDRAISING EVENT TO HELP REPAIR AND MAINTAIN MILDEN'S 12TH-CENTURY CHURCH.  
 Reg'd. Charity No. 295402

FREE PARKING THROUGHOUT THE EXHIBITION IN THE PAVILION CAR PARK OPPOSITE

# Outdoor Theatre at Stoke by Nayland

This summer, Tendring Hall Estate is delighted to welcome the HandleBards to Stoke by Nayland on **Friday 24th July** at 7pm for a lively open-air performance of Shakespeare's Macbeth.

This is Macbeth as you have rarely seen it before. It is fast-paced and full of energy, making it as enjoyable for first-time Shakespeare-goers as it is for long-standing fans, and suitable for all ages.

The HandleBards are an intrepid three-strong troupe spending the summer bringing Shakespeare to venues across the UK.

The performance takes place outdoors within the grounds of Tendring Hall Park. Audiences are encouraged to arrive early, bring a picnic and enjoy the surroundings ahead of the show.

Visit [www.handlebards.com](http://www.handlebards.com) to find out more.

# Leavenheath Summer Fete

Leavenheath Summer Fete takes place on **Saturday 4th July**, 12 noon to 5pm, on the village green. There will be live music and local entertainment, stalls, food vendors, a licensed bar, inflatables, games, a raffle and cream teas in the village hall. Entry and on-site parking are free.



**LEO'S LIONS**  
IS BACK!

**HILLSIDE DADS** VS **FRIENDS & FAMILY**

**DATE: SUNDAY 19<sup>TH</sup> JULY 2026**  
**VENUE: AFC SUBBURY**

To help fund crucial equipment needed at hillside to support our childrens needs

**Hillside**

**Family fun day**  
FREE to enter Food

**HUGE RAFFLE**  
**TOMBOLA**  
**CAKE STALL**  
**GAMES**

Licensed bar  
Wheelchair accessible throughout

**COME AND SUPPORT OUR LOCAL SPECIAL SCHOOL**

# Polstead Films

POLSTEAD VILLAGE HALL

**Friday 12th June, Doors open 7pm**

## *H is for Hawk*

**Based on a memoir by naturalist Helen Macdonald.**

*"A tender drama featuring magical performances from Claire Foy and Brendan Gleeson."*

Tickets £5. Email: [polsteadfilms@gmail.com](mailto:polsteadfilms@gmail.com) to reserve or buy in Polstead Community Shop.

The film starts at 7:30pm.

All proceeds in aid of Polstead Village Hall Charity No. 304933



# Polstead Village Hall

**Community Natter:** Wednesday 3rd June, 10.30am - 12.30pm, Curling in the hall, plus a quiz. Coffee and sweet treats provided.

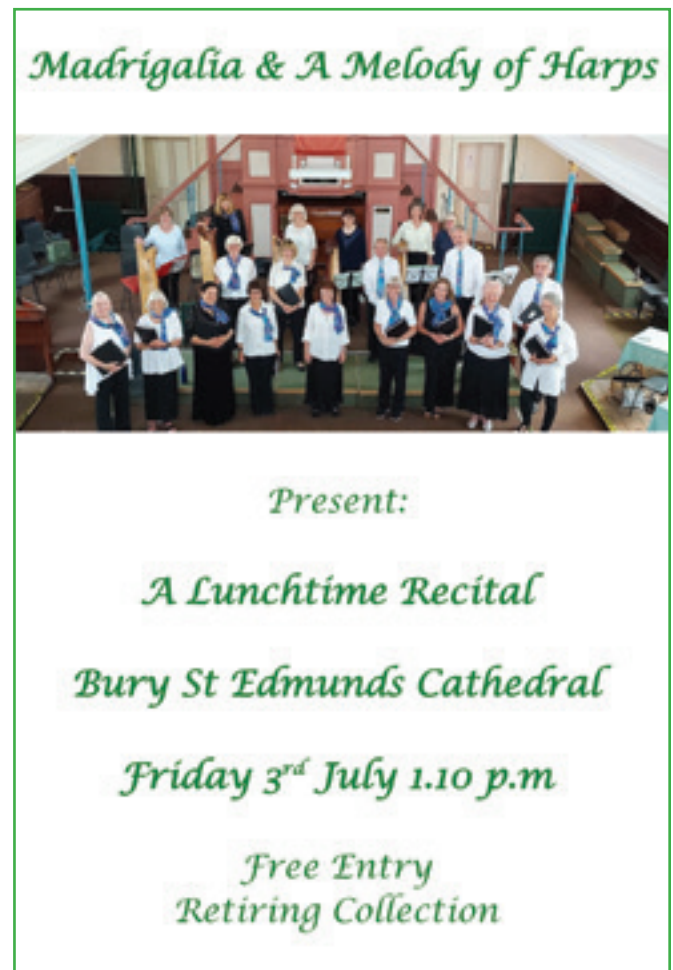
**Bingo:** Saturday 6th June, doors open 6.30pm for a 7.30pm start. £6 for six games, plus two £1 flyers. Late-night flyer £5. Refreshments available.

**Rural Coffee Caravan:** Friday 19th June, 10am - 12 noon. On Polstead village green.

# Winston's Wheels

Winston's Wheels dog charity will be fundraising at the Leavenheath Fete on **Saturday 4th July**, from 12 noon to 5pm, on the village green.

Please come along and support us.



*Madrigalia & A Melody of Harps*



*Present:*

*A Lunchtime Recital*

*Bury St Edmunds Cathedral*

*Friday 3<sup>rd</sup> July 1.10 p.m*

*Free Entry*  
*Retiring Collection*

  
**THE CROWN**  
 BILDESTON



**SET LUNCH AT THE CROWN**  
 Monday - Friday 12-2.30pm  
 2 courses £25, 3 courses £30

---

**BEER GARDEN OPENING**  
 BBQ & Live Music  
*Saturday 6<sup>th</sup> June, 12 - 8pm*

---

**THURSDAY STEAK NIGHT**  
*8oz Steaks from 6pm*

[www.thebildestoncrown.com](http://www.thebildestoncrown.com) | 01449 740510

  
**Vintage Fete**  
*Nedging Hall*



IN AID OF  
 NEDGING  
 CHURCH

£5 per  
 person

**21st June 2026 | 12pm - 4.30pm**

 BBQ & CAKES	 CLASSIC CARS	 LIVE MUSIC	 DRINKS
 TRACTORS	 RAFFLE	 FAMILY GAMES	 STALLS

**QUIZ NIGHT**  
**Boxford Village Hall**  
**Friday 24th July - 7:30pm**  
 Doors open at 7:00pm

Entry by ticket only, from  
 Boxford Post Office

Back by popular request  
 - another evening of  
 brain teasers,  
 laughter and  
 friendly competition

- \* Tickets £10 per person
- \* Up to 8 per table
- \* Bar and Raffle
- \* Sandwiches included

email any dietary requirements to:  
[bdg.catering@talsmedia.uk](mailto:bdg.catering@talsmedia.uk)

**BOXFORD DRAMA GROUP**


**FUNDRAISING EVENT**  
 Please support your local drama group!



**Quiz Night**  
 Little Waldingfield Parish Room  
**Saturday 4th July 2026**  
 7.30pm prompt start  
 £12.50 per person  
 with two course hot meal  
 (Please bring your own drinks)  
 Max 4 persons per team  
 (it may be possible to find partners for you)

**Raffle**  
 Bookings: Sue Bowen  
 07962 210359  
[sdbowen@btopenworld.com](mailto:sdbowen@btopenworld.com)

# BOXFORD

*Vintage & Classic  
Vehicle Rally*

NEW  
FOR  
2026



**FUNFAIR  
STANDS,  
TRADES AND  
STALLS**

**OVER 200  
CARS  
COMMERCIAL & MILITARY  
VEHICLES, TRACTORS,  
MOTORBIKES, STEAM  
ENGINES, STATIONARY  
ENGINES & ORGANS**

**4TH & 5TH JULY 2026**

**BOXFORD, SUFFOLK CO10 5JH  
WWW.BOXFORDRALLY.CO.UK**

Raising funds for Sulsar :  
Suffolk Lowland Search & Rescue

Sponsored by Breakout



# BBQ SEASON IS BACK!

## & OUR FARM SHOP IS HERE TO HELP

From burgers to sausages, skewers to steaks, our Farm Butchery team have the perfect barbeque selection for you to indulge in.

Remember to explore our Farm Shop where you can find all the accompaniments you will need including freshly baked bread, local cheese's, scrumptious sauces and much more!

**HAVE YOU SEEN OUR BRAND NEW SOCIAL MEDIA PLATFORM?**

Our new account highlights the delicious, fresh and local food you can find when coming to Hollow Trees Farm.

01449 741 247 📞  
www.hollowtrees.co.uk 🌐  
shop@hollowtrees.co.uk ✉️  
Hollow Trees Farm, Semer, IP7 6HX



SCAN HERE  
TO FOLLOW US

@HOLLOWTREESFARMSHOP



### GHENT FESTIVE BREAK

09 - 11 DECEMBER 2026  
£375 per person

**Price Includes:**

- Return coach & ferry travel from Sudbury, Boxford & Hadleigh
- Two nights Bed & Breakfast at 3 star Monasterium Hotel
- City tax

Monasterium PoortAckere is in the centre of Ghent, just a 7 minute walk to the canal. This property offers a unique experience of staying in a renovated historic monastery. Bar PoortAckere is open throughout the day and evening.

£70 deposit per person

To reserve your place please email [tracey@boxrivertravelboutique.co.uk](mailto:tracey@boxrivertravelboutique.co.uk) or call 07747 608509

### The London International Horse Show

**HIGHLIGHTS INCLUDE:**

- ALL DAY ACCESS TO SHOPPING VILLAGE
- THE FEI WORLD CUP™ DRESSAGE
- SHETLAND PONY GRAND NATIONAL
- THE KENNEL CLUB CUB INTERMEDIATE ABC AND LARGE ABC STAKES - JUMPING
- PRESENTATION OF AWARDS - SERVICES JUMPING CHAMPIONSHIP DISPLAY

**FRIDAY 18 DECEMBER 2026**  
**AFTERNOON PERFORMANCE**  
**EXCEL LONDON**

**£112 PER PERSON**  
**DEPARTING: HADLEIGH & BOXFORD**

**PRICE INCLUDES:**  
RETURN COACH TRANSFERS  
SEATS IN BLOCK 06, ROWS C, D, E & F  
ACCESS TO CHAMPAGNE BAR - EXCLUSIVE TO THOSE WITH A TOP TIER TICKET

**TO RESERVE YOUR PLACE**  
EMAIL: [TRACEY@BOXRIVERTRAVELBOUTIQUE.CO.UK](mailto:TRACEY@BOXRIVERTRAVELBOUTIQUE.CO.UK)  
CALL: 07747 608509



## CARING & BOUNDARIES WORKSHOP

**WOULD YOU LIKE TO EXPLORE THE NATURE OF HEALTHY BOUNDARIES WITHIN YOUR CARING RELATIONSHIP?**

PLEASE JOIN US AT OUR NEXT CARING AND BOUNDARIES WORKSHOP

**Thursday 28th May 2026, 10.30am-1pm**

The Stevenson Centre, Great Comard, CO10 0WD

Please note that places must be booked in advance

[www.suffolkfamilycarers.org/upcoming-workshops/](http://www.suffolkfamilycarers.org/upcoming-workshops/)  
or contact us for bookings and enquiries:  
[hello@suffolkfamilycarers.org](mailto:hello@suffolkfamilycarers.org) or 01473 835477

**Suffolk Family Carers**  
Living Fuller Lives

Suffolk Family Carers Limited Registered Charity No. 1088027. A Company Limited by Guarantee in England No. 2617090. Registered Office: Unit 2, Mill Lane, Buxton Park, Great Comard, Suffolk

## SUFFOLK TREE SERVICES LTD

**For All Aspects of Tree Works Including:**

- Planting • Reducing • Pollarding • Felling •
- Stump Grinding • Hedging Works •

**We offer a complete and professional service**  
Established over 30 years

We are a local, friendly and experienced company

- Free Estimates • 24 Hour Storm Damage Cover •
- Fully Insured • Tree Reports and Consultancy

Woodchip and Firewood for Sale *info@suffolktreeservices.co.uk*  
Tel: 01787 319200 *www.suffolktreeservices.co.uk*




MARY - ANNE MORRISON  
MILLINERY



**07850 571879**

[www.mamorrison.co.uk](http://www.mamorrison.co.uk) [hats@mamorrison.co.uk](mailto:hats@mamorrison.co.uk)

## JARVIS

BUILDING CONTRACTORS LTD

T: 01787 211839  
M: 07823 776005



E: [info@jarvisbuildingcontractorsltd.co.uk](mailto:info@jarvisbuildingcontractorsltd.co.uk)

FOR ALL TYPES OF BUILDING AND LANDSCAPING NEEDS

- ♦ NEW BUILDS
- ♦ EXTENSIONS
- ♦ RENOVATIONS
- ♦ FLINT & STONE WORK
- ♦ KITCHEN & BATHROOM INSTALLATION
- ♦ DESIGN & PLANNING
- ♦ ALL INSURANCE PROJECTS
- ♦ ELECTRICS & PLUMBING
- ♦ LANDSCAPING
- ♦ DECORATING SERVICE ECT...

[jarvisbuildingcontractorsltd.co.uk](http://jarvisbuildingcontractorsltd.co.uk)

## JARVIS

HUTMAKERS LTD

T: 01787 211839  
M: 07823 776005

**BESPOKE SHEPHERD HUTS AVAILABLE**



E: [info@jarvishutmakersltd.co.uk](mailto:info@jarvishutmakersltd.co.uk)

Contact us today to discuss your project and see how Jarvis Hutmakers can help you create the perfect outdoor space for your home in Suffolk or Essex. Let us turn your dreams into reality with our affordable, quick installation, and high-quality huts and shepherd huts garden rooms.

Book your appointment to visit our Show Hut  
Ramblers, Bulmer Lane, Groton Sudbury, Suffolk CO10 5EZ  
[jarvishutmakersltd.co.uk](http://jarvishutmakersltd.co.uk)

Proud Sponsors of





# *A Taste of East Anglia at Kentwell Hall*

*Local food, drink, chef demonstrations & family activities  
return to Long Melford on Saturday 13th June*

The Taste of East Anglia is all about celebrating, promoting and showcasing the very best producers, restaurants and chefs that we are so lucky to have in this region, and is located in the grounds of the Tudor mansion of Kentwell Hall in Long Melford, Suffolk.

Nearly a hundred stalls will be filling the grounds on Saturday 13th June, selling a whole range of top-quality produce, including local meats, freshly baked sourdoughs and breads, cakes and pies, locally grown plants, locally distilled Suffolk gins and craft ales, beautiful brownies and traybakes, Suffolk jams, honey, marinades and sauces, plus vegan pastries and a wonderful selection of craft stalls.

The fabulous main kitchen theatre will be back with an amazing line-up of some of our region's very best chefs, including James Carn at Lark, Greig Young from The Bildeston Crown, Adam Spicer from The Pettistree

Greyhound, Jon Jackaman from The Ice Restaurant, Lee Cooper from Hintlesham Hall, plus Michelle Gillot, one of the UK's leading pastry chefs. A special extra this year will be a food and wine pairing session, headed by Wine & Dine with Burnt House Vineyard, for all the audience to enjoy.

Back by popular demand is the vineyard area, which will be showcasing the best of regional wine, including Burnt House Vineyard, Flint Vineyard and many more. Also returning is the BBQ zone, where a number of pitmasters will be showing off their skills on an open fire all day, with several demonstrations on how to get the best out of your BBQ this summer.

There will be a great range of quirky vans and horseboxes cooking up over fifteen types of delicious street food, from Mexican burritos, Suffolk chicken burgers, New York-style bagels, New Delhi Indian skewers,

sweet and savoury crepes, crispy duck rotisserie, Neapolitan-style pizzas, hog roasts, chicken flatbreads, Korean corn dogs, Caribbean curry, smash beef tacos, gluten-free and dairy-free options, vegetarian salads and dips, sushi, Texan-style smoked BBQ brisket burgers, chicken and vegetarian gyozas. You'll be able to sit and enjoy a pint of local craft ale, a cocktail or mocktail or two, or fresh barista coffee. Music is provided by Olive, plus there will be a range of kids' activities to keep the whole family entertained.

10am - 5pm, 13th June 2026  
Tickets are just £9.50 per adult, or £20 for a family ticket.

FREE parking and dogs welcome.  
Kentwell Hall, High Street, Long Melford, CO10 9BA

[www.tasteofeastanglia.co.uk](http://www.tasteofeastanglia.co.uk)



# Chris Wright

## CHIMNEY SWEEP



☎ 07500 046 899  
 ✉ Enquiries@SFSsuffolk.co.uk



WOOD BURNERS  
OPEN FIRES

STOVE PARTS &  
MAINTENANCE

BIRD GUARDS &  
NEST REMOVAL



FULLY  
TRAINED  
& INSURED



## QUOVE ACCOUNTING

**Flexible Accounting.**  
 For Business and Personal accounting solutions.

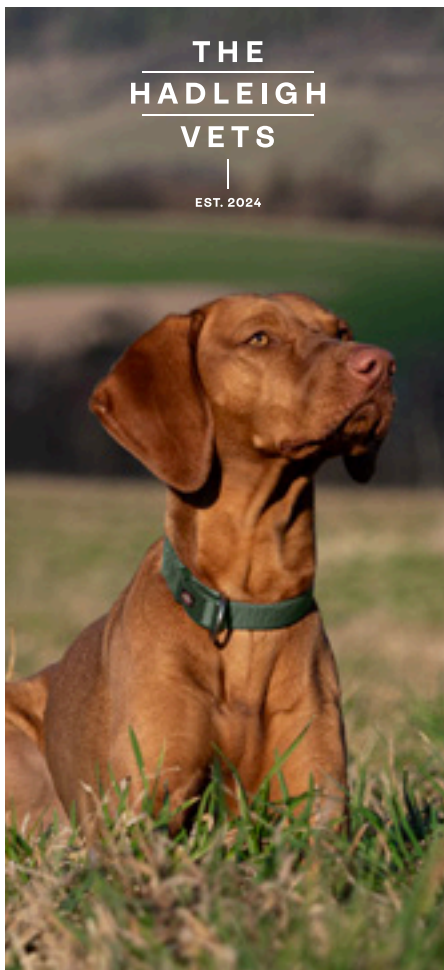


**Contact us.**  
 hello@quove.co.uk  
 01284 845120  
 quove.co.uk

3 Brickfields  
 Business Park,  
 Woolpit, IP30 9QS

**Quality.  
 Unique.  
 Objective.  
 Visionary.  
 Experts.**

**Big enough to cope,  
 small enough to care.**



## Hadleigh's Independent Veterinary Practice

- **Passionate and experienced team** - we are dedicated to providing an excellent standard of pet healthcare with the same vet continuity
- **Personalised care** - we build genuine relationships with our clients to provide tailored treatment to every pet
- **Advanced facilities** - our modern, purpose-built practice offers advanced CT scans, endoscopy, keyhole surgery and more
- **In-house expertise** - our knowledgeable team can handle complex and critical cases within our practice
- **Overnight care** - our hospitalised and post-surgical patients receive round-the-clock attention from our own team

Experience exceptional veterinary care where your pet's health and happiness are at the heart of everything we do.



Crockatt Road, Hadleigh IP7 6RH  
 01473 598400

To find out more and register, visit  
[www.thehadleighvets.com](http://www.thehadleighvets.com)



# Seasons in the Field

*Rowan Collinson's June residency at Mill Tye Gallery invites visitors to slow down, look closely and notice the quiet changes in the land*

Set on the banks of the River Stour, in a landscape shaped by water, weather and time, Mill Tye Gallery provides a fitting setting for Rowan Collinson's quietly absorbing June residency and exhibition, *A Field Study: Documenting Four Seasons*.

Collinson's work begins with a single field near her home - an unassuming patch of countryside that, over the course of a year, becomes a place of close attention and gentle revelation. Through patient observation, she traces the subtle shifts that mark the passing seasons: the lengthening light of spring, the density of summer growth, the slow fade into autumn and the spare clarity of winter. What emerges is not simply a record of place, but a meditation on change itself.

There is a deliberate stillness to Collinson's practice. Rather than seeking dramatic moments, she turns towards the easily overlooked - the quiet rhythms of hedgerows, the texture of grasses and the residue of weather. Her images ask the viewer to pause, to look again and to recognise the landscape as something alive, responsive and continually in flux.

Blending digital photography with sustainable analogue processes,

Collinson incorporates natural materials gathered directly from the field into her work. This integration of subject and medium creates a tactile, intimate connection between land and image, as though the landscape has left a trace of itself behind.

Presented as a cohesive series, the photographs unfold as a visual cycle, echoing the turning of the seasons and the enduring presence of the place itself. Seen together, they offer a gentle but resonant reflection on time, ecology and our relationship with the natural world.

Throughout June, Collinson will be working on site as Artist in Residence during the Suffolk Open Studios weekends, offering visitors the chance to encounter both the finished works and the processes behind them. This open, conversational approach continues through a programme of artist-led workshops and informal drop-in sessions, inviting deeper engagement with themes of landscape, materiality and making.

In a gallery surrounded by an 'Area of Outstanding Natural Beauty', *A Field Study* feels particularly at home - a reminder that even the most familiar landscapes hold layers of change, if we take the time to notice them.

**Preview:** Saturday 6th June, 10.30am-6pm

**Exhibition:** 6th-28th June 2026

**Opening hours:** Thursday to Sunday, 10.30am-4pm

**Free admission and parking**

**RSVP:** Register your interest and stay updated via the gallery website.

*Mill Tye Gallery and Arts Centre  
3 Cornard Mills, Mill Tye  
Great Cornard, Sudbury CO10 0GW  
[www.milltyegallery.co.uk](http://www.milltyegallery.co.uk)*



# Readers' Letters

Dear Editor

I would like to share a few thoughts about how we use our outdoor spaces when the sun shines.

Many of us love to relax, perhaps listening to birdsong or reading a book. Others like to play games or listen to music, and that's great - so long as we are mindful of each other.

Most of us keep things calm and personal. After all, with the headphone options we have now, we don't have to blast our music to everyone around us. Just imagine if we all did - there would be a real cacophony!

And let's spare a thought for neighbours who work night shifts and need quiet during the day.

So, as the sun shines and the evenings lengthen, let's all be a little extra considerate.

Best regards,  
Boxford Resident, name withheld

Dear Editor

I thought readers might enjoy these photographs of our Aberdeen Angus twin calves, born at Bowerhouse Farm at the end of April.



Twin births are not often seen in Aberdeen Angus cattle (on average fewer than 1% of births), so the safe arrival of these two calves was a lovely surprise and a memorable spring moment on the farm. Both calves are doing well, and it was a pleasure to capture them for Box River News readers.

Alan Keeble  
Bower House Tye

# Boxford Parish Council Update

The parish council has received the preliminary plan from Suffolk Highways for the positioning of signage for the 20mph speed limit in the village. This has been examined and returned with our suggested amendments which reflect what had been discussed at our original meeting. As mentioned previously, the approval process is likely to take some time, as it involves a fair amount of legal work to ensure that the plan complies with the law. Once the final plan has been received and reviewed, costings will be worked out and a public consultation arranged.

Negotiations with the diocese to use part of the land behind the village hall as a car park are continuing, and hopefully it won't be too long before we have a decision. Grass cutting was slightly delayed, but the village contractor has now caught up and the village is looking much neater. In future, the grass will be cut on a regular basis. Please let a member of the council know if you notice an area that has been missed.

The parish council, with the help of some members of the original Neighbourhood Planning Group and other volunteers, is working through a strategic review of community development going forward, particularly in light of the new housing targets being proposed by central government for the county as a whole and within Babergh District. It is anticipated that this initial work will be completed shortly and will then be discussed within our community and with the strategic planning policy groups at county and district level.

Now is the time to acknowledge the hard work that a group of residents have put in over many months and years to help improve our village. Our sincere thanks to the Boxford Volunteer Management Group for their tremendous support for the village and the parish council. Their hard work has led to a number of improvements, with more to come. Examples include saving our bus service, progressing work on the neighbourhood plan, car parks and 20 mph speed limit, and the Village Museum in the Old Gaol, which was also refurbished.

There has been a considerable amount of time and work put into looking after the cricket square and preparing the wicket for each match. This has all been done on a voluntary basis, and the following people have been instrumental in carrying this out: David Burden, Colin Parr, Kevin

D Couling, Colin Bullock, Jack Clark, Chris Southgate and Tim Bevan, with additional preparation and advisory work carried out by David Oakes, Head Groundsman at Sudbury Cricket Club, without whose invaluable help we would have struggled.

The annual village meeting was well attended, and the Boxford Friendship Group provided tea, coffee and biscuits on arrival. Presentations were made by our county and district councillors, who reported on various subjects, not only what had been achieved over the last year but also some of the major changes in local government planned for the future. Thank you to all the residents who attended and took an active part in the proceedings.

If you feel you have the skills and time to help the parish council in its endeavours to improve the village facilities, your help would be appreciated, even if it is only for a short time. The parish council still needs one more councillor, so if you are interested in joining the parish council or are able to help in any way, please contact our parish clerk, Ms Zoe Rumsey, at [clerk@boxford-pc.gov.uk](mailto:clerk@boxford-pc.gov.uk).

David Warren  
Chairman, Boxford Parish Council

# Boxford Gardening Society

On 5th May, Andrew Mikolajski gave a talk entitled *Do Your Roots Need Doing?*, describing the importance of root care, especially at planting time, and the essential use of mycorrhizal fungi. Roots have many functions, including taking up nutrients and, as in the case of orchids, clinging on to their host. He outlined the need to prune roots when transplanting trees and shrubs, and to tease out spiral roots when removing plants from pots.

When planting a new rose where an old rose has died, he suggested planting the new rose in a cardboard box inserted into the soil. By the time the cardboard has rotted down, the rose will have settled in. He also listed the diseases and pests affecting roots, including vine weevils and honey fungus, and gave details of treatments.

Boxford Gardening Society welcomes new members and guests. Meetings are a friendly way to hear interesting speakers, pick up practical tips and meet others with a shared interest in gardening.

For more information, please email: [enquiry.boxfordgardeningssociety@outlook.com](mailto:enquiry.boxfordgardeningssociety@outlook.com)

# K WILLIS BUILDERS

All types of building work undertaken

- extensions • alterations
- fencing • landscaping
- decoration • driveways
- roofing repair jobs

Telephone: 07771 638 398 / 01787 586 031

kwillisbuild@hotmail.com



## S B Electrical



For all your electrical work

⚡ large or small ⚡

Free Estimates  A Member of NAPIT®

Electrical Certificates Issued

Part 'P' Registered  Insurance Backed Guarantee

**Tel: 01787 247043**

email: info@sbelectrical.biz or visit www.sbelectrical.biz

## Ipswich Veterinary Centre

For a professional caring service

- 24-hour hospitalisation and emergency care provided on-site
- Advanced diagnostic imaging including CT scanning service
- Veterinary referral services
- Physiotherapy and hydrotherapy
- Pet behaviour counselling, dog agility and training classes
- Pet shop and grooming lounge.



An Independent Veterinary Practice with a personal approach

A member of **FIVP**

Tel: **01473 555000**

enquiries@ipswichvetcentre.co.uk

www.ipswichvetcentre.co.uk

1 Donald Mackintosh Way, Ipswich, Suffolk IP8 3SU



Set in the beautiful surroundings of Kersey Mill, Woodland's nursery offers childcare from 11 months to 4 years in four age-appropriate rooms.

Within our enchanting garden, we help forge a love of the outdoors whilst educating children through play.

Children are taught by Qualified teachers who are also forest school trained. Most importantly our children make cherished memories with lasting respect for each other and their environment.



Dance, Yoga and 'All Sorts Tots' classes will help develop social and communication skills.



Email: manager@woodlandsnurserykerseymill.co.uk  
WWW.WOODLANDSNURSERYKERSEYMILL.CO.UK

## MICROPLANT

08703 210256 / 07850 210256

E-mail: charles@microplant.net

Website: www.microplant.net

Hire, Sales, Servicing & Repairs of Compact Tractors, Mini Loaders Fencing, Landscaping & Paddock Maintenance Machinery

Mini Tractors  
Loaders  
Rough terrain forklift  
Skidsters  
Mini Diggers  
Post Hole Borers  
Hyd' Post Drivers  
Trenchers  
Rotavators  
Stoneburiers  
Power Rakes  
Harrows  
Mowers  
Associated equipment



Hydraulic post driver—either centre mounted or offset behind tractor. Also available mounted on Weidemann loader



## Groton Quiz & Curry Success

A very successful quiz and curry evening was held in Groton Village Hall at the end of April, with over £900 raised for the village hall's funds. Huge thanks to everyone involved, particularly quizmaster Steve Foster with his pitch-perfect brain teasers.

The next event in the village hall will celebrate its centenary - it's 100 years since Groton Village Hall, originally a WW1 army medical hut, arrived in Groton in 1926. All Groton residents and friends are warmly invited to share a 'high tea' from 3-5pm on **Sunday 14th June**, with children's activities and a special display of the hall's history. Please contact Joanna on **07845 940008** or Jayne on **01787 211360** if you'd like to attend.

## Boxford WI

Following the WI annual meeting in May the members enjoyed a 'cake off'. Some of the talented bakers in the group provided cakes to taste and after some serious tasting took place over a cuppa, the 'courting cake' received the most votes and recipes were shared.



If you are interested in joining the WI why not come along to the village hall on the first Wednesday of the month at 2pm where you will receive a warm welcome.

Once you are a member you will be able to enjoy the following interest groups which we hold on a regular basis:

- Dining Divas (lunch group)
- Chatterbox (afternoon with tea and cake)
- Knit and Natter
- Book club

For more information please contact our Secretary, Lyn Beer on **07961 357526** or email [lyn@the-brook.net](mailto:lyn@the-brook.net).

## Hadleigh Patient Participation Group (PPG)

### Toppesfield Car Park:

The good news is this car park has finally made it to the top of Babergh's pothole repair list. The bad news is it can't be done at the weekend.



Workmen will be beavering away on **Wednesday 17th and Thursday 18th June**, weather permitting, of course. This will mean no access to either the Toppesfield car park or the patients' car park. Patients will have to make use of other parking areas in the town, finish their journey on foot, or postpone their visit until after 18th June. Apologies for any inconvenience caused, but we will gain a pedestrian crossing in front of the Practice and an even surface to walk on.

**Patients' Car Park:** Assuming there is access to this car park, you are kindly reminded that these spaces are for the convenience of patients with a medical appointment or who are collecting medicine from the pharmacy inside the practice. It should not be used for any other purpose.

### Boxford Community Car Scheme:

This service is available for patients needing transport to hospital or health centre appointments. Contact Jen Eastwood on 01787 211 853 or [jen.eastwood8@gmail.com](mailto:jen.eastwood8@gmail.com)

**Vaccine Statistics:** A total of 1,633 patients received the Covid jab: 1,105 at the practice, and a further 154 in care homes and 41 housebound patients. The remaining patients had them at a pharmacy or walk-in centre. Over the next three weeks, we will complete those who are housebound. Once again, sincere thanks to the volunteers who gave up their time to ensure a speedy flow of patients in and out of the Practice.

From mid-May, 60 patients per week received the RSV vaccine at the monthly Wednesday morning clinic. This will continue throughout the summer at a rate of 50 patients per week until all patients aged 80 and over have been called.

Patients who are eligible for shingles and pneumo vaccines will be invited to our daily lunchtime vaccine clinics when they become eligible.

**Health Care Assistant/GP Assistant:** As part of the health centre team, these assistants are involved in direct patient care, providing valuable support to GPs' work, very often at their own clinics. They are able to check blood pressure and weight, monitor long-term conditions, e.g. diabetes, perform ECGs and take blood samples. They also support practice nurses with immunisation programmes, carry out NHS health checks, such as cardiovascular risk screening, and offer helpful advice about diet, exercise and stopping smoking.

### Anima on a Monday:

Monday morning



is always a busy time for phone calls. You can help reduce them by making any request you may have via Anima. This will leave the telephone lines free for patients unable to use this online service.

**IT Help:** Once a month, Communities Together offers helpful IT advice in the upstairs room of Hadleigh Library. The next session will take place on **Tuesday 2nd June from 10am to 12 noon**. Booking is essential as places are limited. Call Tracey on 01449 707 031 or email [info@communitiestogether-ea.org](mailto:info@communitiestogether-ea.org)



**Bowel Cancer Screening:** Bowel cancer is treatable especially if detected early. Screening makes early detection possible and yet 20% of Hadleigh patients do not respond when invited to carry out the simple test procedures. For further information on the importance this screening please visit <https://nationalscreening.blog.gov.uk/2025/04/11/wealth-of-evidence-highlights-the-benefits-of-bowel-cancer-screening>

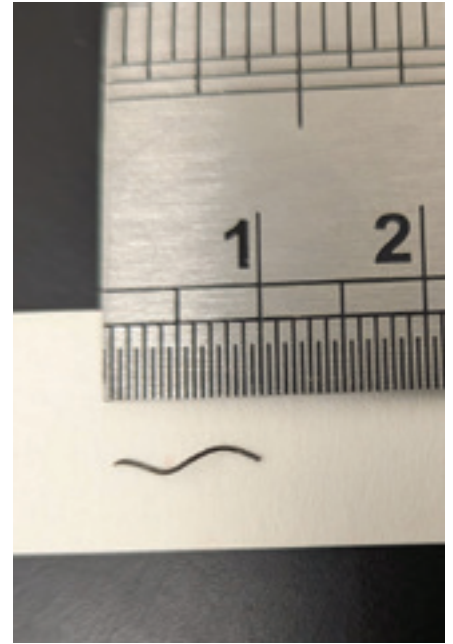
**Out of Hours Doctor:** Call 111 or visit [www.111.nhs.uk](http://www.111.nhs.uk)

**Website:** [www.hadleighhealth.co.uk](http://www.hadleighhealth.co.uk)

**Facebook:** [www.facebook.com/HadleighHealthCentre](https://www.facebook.com/HadleighHealthCentre)

**PPG Chair/ Art Work:** Jan Devey [deveys@btinternet.com](mailto:deveys@btinternet.com) **01473 827091 or 07881 798999**

**Health Centre:** 01473 822 961



# *Mango and the Mystery Limp*

## *A Labrador's morning walk leads to an unexpected veterinary puzzle*

Hello, lovely humans of Box River! My name is Mango and I am a one-year-old black Labrador. This means I am officially a professional explorer, a dedicated sniffer of bushes, and the proud owner of a tail that functions a lot like a high-speed windscreen wiper.

My story begins on a perfectly normal morning walk. I was busy doing very important Labrador business (checking the local news via the medium of sniffs) when I saw it: the Most Interesting Hedge in the World. Naturally, I dove in head-first to investigate. I emerged feeling very accomplished but, a few minutes later, something felt... off.

Every few steps, my front leg felt quite sore. I did not want to make a fuss as I am a very brave and busy lady. However, my owner is very observant, even though I was trying to be stoic. Soon enough, we hopped in the car and headed off to see my friend, Vet Jo.

When I got to the vets, everyone was very happy to see me. I tried my best to be a good girl and, as a result, did not wince or complain at all when Jo watched me move, gave me a thorough leg massage (apparently it is called musculoskeletal palpation?) and thoroughly inspected my whole forelimb. I thought I was being brave, but my lack of response was apparently not very helpful for the humans.

Because I was not giving the game away, Jo and my owner talked about possible causes like cartilage concerns,

tendon inflammation and elbow dysplasia, which are more common diagnoses for young, bouncy ladies like me. These sounded serious, and because they could not see anything wrong with my skin or any swellings, they decided I needed a super 'special agent' look at my leg. This is called a CT scan.

I came back the very next morning for my date with the big machine. In order for me to stay still for a whole twenty minutes (impossible!) while I was in the scanner, I needed a small injection which made me have a great nap. While dreaming of pheasants, the vets worked out something I knew all along - I am even more beautiful on the inside than on the outside! The scan also found something very naughty hiding in my paw.

Deep inside my foot, tucked away between the tendons of my middle toes, was a tiny piece of wire! There was no wound or swelling visible from the outside. It was like a tiny metal hitchhiker had pierced my foot and gone for a ride without an invitation. Because Jo found it so quickly with her high-tech scanner, she said we could fix it the very next day. I felt quite proud to be part of such advanced veterinary science.

The next morning, I went back for my operation. The nurses gave me that floaty and dreamy medicine again, and my personal veterinarian went on a

rescue mission to get the wire out.

She had to be very careful because my toes have lots of very delicate but very important structures in them. The surgery went perfectly. The tiny wire was extracted (it was about the thickness of a hair!), and I woke up feeling much better.

I spent the next week wearing some very fashionable bandages. I had a few dressing changes, which mostly involved me getting lots of extra cuddles and being told how brave I was. Honestly, I could get used to that level of attention.

Great news - I am now back to full speed. My leg does not feel ouchy anymore, and my tail is back to its highest speed setting. Jo was very happy because, without that CT scan, they might never have found the wire before it caused a nasty infection or even travelled elsewhere deep into my leg. It all happened very quickly, meaning I could get back to my sofa and my snacks much faster.

Now, if you will excuse me, I think I hear a snack cupboard opening. Or perhaps a squirrel needs chasing (though I will try to stay out of the hedge for at least a week!).

*Dr. Jessica Hudson BVMedSci (Hons)  
BVM BVS (Hons) BSAVA PGcertSAECC  
MRCVS  
[www.thehadleighvets.com](http://www.thehadleighvets.com)*



# *Smugglers Were Here!*

## *Boxford Society uncovers how the shadowy trade affected local villages in the 18th century*

Through films, books and even music, the life of smugglers has often been glamourised as mysterious and desirable, but the truth was far from that.

### **The National Scene**

Smuggling in Britain was the response to high taxes on everyday goods. From the 13th century onward, wool exporters smuggled across the sea to avoid customs duties. Four hundred years later, in the 17th and 18th centuries, a huge smuggling network was in place across the country. Heavy taxes on tea, wine, tobacco, spirits, silk and lace made smuggling an immensely profitable business. The scale of the problem during what's known as the golden age of smuggling was huge and the government was determined to tackle it. In 1784 the Prime Minister, William Pitt the Younger, suggested that of the 13 million lbs of tea consumed in Britain, only 5.5 million lbs had been brought in legally. This shows that people of all levels in society were supporting smuggling.

During the Napoleonic Wars (1803 to 1815), taxes soared, bringing hardship for the population but offering

enormous margins for smugglers. In 1809, smuggling became an incredibly dangerous profession as the authorities were desperate to stop it. However, smuggling became an even greater thriving underground economy. It was no longer seen so much as a crime by many locals, but as a good way of earning enough to live on, and of providing luxuries for richer folk. A member of Parliament at the time observed that a young fellow in the country could not earn more than 18 pence a day from being a farmer, but he would get a guinea (252 pence) a day working for a smuggler. However, smuggling was not just for low-level criminals or the poor - it involved powerful figures across society.

Teams of Government Preventive Officers (GPOs) patrolled the coasts, but there were not enough of them and the smugglers often avoided detection. The smugglers secretly landed booty on secluded parts of the coastline. The whole business involved seamen and land workers, many based well inland. Although numerous people enjoyed the illicit gains from smuggling, the reality was brutal. Local people were fearful of violent reprisals against informers, and GPOs

were murdered. Corruption meant that captured smugglers were often able to avoid harsh punishments.

In the 1840s, under leaders like Sir Robert Peel, import duties on staple items, tea, tobacco and various manufactured goods were slashed. The mass removal of duties on around 450 items eliminated many of the economic incentives that had fuelled smuggling. Its profitability dropped almost overnight as legally imported goods became cheaper than smugglers' wares.

### **The Suffolk Scene**

While the whole Suffolk coast was touched by smuggling, a major centre in Suffolk was not on the coast, but some 40 miles inland at Hadleigh, where one of Suffolk's, (and indeed the country's), most successful smuggling gangs was based. At full strength, the gang numbered 100 men, each turning out with up to two horses. Such a force

**Above:** *Smugglers bringing barrels ashore. Painting by George Morland 1763-1804. National Maritime Museum Greenwich.*



would have been almost unstoppable, even when the customs authorities had military support. Descriptions of the gang's activities recorded in the custom house letters suggest that the authorities were not able to cope with the massive number of landings.

Custom House records from 1745 provide a day-by-day account of massive landings at Sizewell Gap:

*5 May:* 40 horses loaded with brandy and tea.

*20 May:* 70 horses with dry goods landed.

*27 May:* 27 horses with wet goods and 36 loaded with tea.

*11 June:* 60 horses, most with brandy, 53 with tea.

*16-17 June:* A massive operation involving 134 horses moving tea over two days. (80 horses mostly with tea landed out of Cobby's cutter at Old Chapel about 2 miles from Sizewell and at the same time 34 horses all loaded with tea landed out of the May Flower cutter and 20 the next morning out of the same cutter at Sizewell.)

*22-25 June:* Over 100 horses carried away 300 'half-ankers' (small casks) of spirits.

*2 July:* 83 horses with tea, 9 waggon loads wet goods.

*12 July:* 50 horses tea.

*17 September:* A peak show of force

with 120 horses and 100 armed smugglers.

*10 November:* 50 horses dry goods, 1 cart wet goods.

*23 November:* At least 40 horses, mostly dry goods.

This list is far from comprehensive and there may well have been just as much landed unobserved.

These goods would have been distributed across a large area including the villages of the Box and Brett Rivers.

*The Bury and Norwich Post* was a key record of rural life and crime in West Suffolk during the 1840s. Reports from 1842-1843 reveal a society struggling with poverty, where 'crimes' often involved the theft of basic food or livestock, and punishments like transportation to Australia were still common for relatively minor offences. However, many smugglers managed to escape such punishment because of their networks across the whole of society. Interestingly, very few crimes are recorded as smuggling, though it is thought that this was often disguised as horse theft, bodily harm and other crimes that were a result of the forays between the two sides.

## The Local Scene

In spite of the distance from the preferred landing point at Sizewell Gap, Hadleigh had, in the mid 18th century, one of the biggest, best organised, most ruthless and feared organisations in Eastern England. They could outpace the King's Dragoons. They moved their contraband with military precision, using a mixture of ancient trackways, hard-based Roman roads and secret local shortcuts to traverse the 40 miles from the coast to their Hadleigh headquarters and hiding places in the surrounding villages.

Villages like Semer, Aldham, Layham, Kersey, Groton, Hadleigh Hamlet, Boxford, Edwardstone, Polstead and no doubt others were closely tied to this smuggling by their proximity to Hadleigh and location on the inland trade routes of the 'Free Trade'. These villages were used to 'rest up' or change horses. They were also vital hubs for concealment and distribution, with their 'safe houses', cellars and barns used to hide contraband before it was moved onward to towns such as Cambridge, Ipswich and London, or sold directly to local gentry and clergy who were often complicit in the trade. The tea and spirits were often distributed through smaller "retailers". Smuggling became a respectable occupation in the community.

The Hadleigh Gang, led by John Harvey, operated from Pond Hall, Hadleigh. The town had many deep cellars and attic rooms of adjacent houses running into each other. All were useful for hiding contraband. The gang could muster up to 100 men and 200 horses for a single 'run'. John Harvey frequently targeted inland warehouses to reclaim seized contraband. In 1748, an armed gang of 30 smugglers removed 60 bags of about 1512lbs of tea from the customs house at Colchester. They outrode the pursuit to Hadleigh, and when they entered the town they simply vanished from sight.

The gang frequently clashed with the



**Above:** A smuggling lugger chased by a naval brig. Thomas Buttersworth, 1768-1842. National Maritime Museum, Greenwich.

**Right:** The beach at Sizewell Gap today. An easy landing beach with heathland behind and with dug outs for hiding some booty.

preventive forces, but the biggest battle took place in 1735. The gang's store at Semer ("a little house at Seymor near Hadleigh") had been discovered, and the customs authorities, backed up by the military, took the cache of tea to the George Inn in Hadleigh for overnight storage. The next day, 20 armed smugglers ambushed the party just outside the town. One Dragoon was killed, the others were wounded, and the gang rode off with the tea. But 17 smugglers were recognised and, later, two Hadleigh men, John Willson and John Biggs, were hanged at the scene of their crime. This did not deter the rest, but 12 years on, in 1747, the leader of the gang, John Harvey, was committed to Newgate prison and eventually transported for seven years. Even this setback was temporary, as the following year the gang broke open the King's Warehouse in Ipswich to rescue 'their goods'.

**The Box Valley Scene**

Boxford and surrounding villages were largely engaged in the 'Safe House' strategy. The smugglers frequently demanded that local farmers leave their outbuildings or stables unlocked for the storage of contraband or



horses, making many unidentified barns in the area potential storage sites. Some will have joined the scheme willingly. Others may have been reluctant but fearful of the smugglers. Once a farmer found himself locked into the system, his workers could also take advantage of the situation by becoming a horseman, possibly stealing a horse first, or a 'footman' or 'tubman' to carry goods

overland. Churches were also used as hiding places, along with pubs and maltings.

In Boxford in 1843, preventive officers found a secret chamber at a malting "nearly 100 ft long", for cheating the revenue. It is unlikely that this was The White Hart barn on this occasion, as its barn is currently only roughly 46 ft long. We cannot even begin to guess which malthouse it was, because over the years Boxford had 22 maltings! However, the one on the corner of Butcher's Lane is guessed at by some researchers. Maltings, with their numerous floors for the different processes and lots of bags of malting stock under which to place contraband, were ideal hideaways. Maltings Farm, Groton, with its barns and cart lodge, was one such. The cart lodge was built with an underground vault, which was used by the Hadleigh Gang in 1745 to conceal tea, brandy and gin.

There appears to be no evidence of the River Box itself being used for smuggling, but The White Hart was probably ideal for the Hadleigh Gang, with its range of barns and huge malting house. Cecil Hughes thought that it was a smugglers' store, according to folklore, which may well be true. Let's hope the evidence will eventually be found in some as yet unread ancient document.

The smugglers had specific roles, one being 'tubmen'. They were the labourers responsible for transporting spirits from the beach to inland hiding places. They acted as human packhorses to move heavy, illegal, alcohol-filled barrels. The 'tubs'



were small kegs, called 'half-ankers', containing approximately 4 to 4.5 gallons of high-proof spirits (gin or brandy). They were usually designed with flattened sides to sit better on a person's body or a horse. Tubmen often moved in teams. One tubman would carry two tubs, one strapped to the chest and one to the back, totalling around 90 lbs (45 lbs each). Some would walk briskly for over 10 miles in a single night to deliver the goods. They were often protected by armed members of the smuggling gang against custom officers. They were typically hired from the local population of fishermen, labourers or craftsmen, and could earn more in one night of smuggling than in a full week of regular work. The work was physically taxing, with the tubs causing injuries and breathing difficulties. They were constantly at risk of being seized by authorities and, if caught, could face imprisonment or transportation.

While lists do not name custom officers stationed directly at Boxford, it was most likely visited by Hadleigh officers. The Hadleigh officers' regional records indicate a lot of activity in the area. A smuggling-related incident in 1810 included a robbery attempt near Green Lane, Polstead, typical of areas where smuggled goods were moved inland.

**Above, from left:** *The Tub Man*, from an Ogden's Cigarettes card, showing a tubman carrying 90 lbs of spirits.

*Smugglers alarmed in a 'safe house'. An 18th-century print.*

**Left:** *Smugglers entering a house for concealment or sale. Etching by Frederick Bacon, 1838.*





annual meetings at The Fleece in Boxford to settle accounts and debts resulting from the prosecution of criminals, including those involved in the local trade of illicit goods.

Newspaper notice 08 July 1797: "The Annual Meeting of the Boxford Association for Prosecuting Felons will be held at the Fleece in Boxford, on Thursday the 20th July instant, at eleven o'clock in the forenoon, to settle the Treasurer's accounts; and after twelve o'clock, no claims upon this society will be attended to. Thomas Clubbe. Agent and Treasurer."

James Merry is recorded in March 1843

as an excise officer in nearby Hadleigh and probably served Boxford in that capacity. Some accused were brought before the JP, who was usually from the landed local gentry or clergy. There was often a conflict of interest because local magistrates and clergy were often customers, and were complicit, either by helping move the goods or by simply turning a blind eye in exchange for cheap tea or spirits. It was common for a keg of brandy to be left on a

Law enforcement in Boxford was handled by local parish constables. The local constable, however, may not have been too helpful, as he was likely to have a barrel of brandy in his cellar! There would have been local village informers, as it would have brought a massive reward, but they would be more hated than the exciseman. However, any customs officer could get access to buildings by using a general search warrant. It did not have to be specific, and he could enter anywhere he chose to search.

Due to the rise in crime and smuggling-related theft, local residents formed private associations to offer rewards and hire investigators. Thomas Clubbe (linked to Clubs Lane perhaps, off Ellis Street?) served as the Agent and Treasurer for the Boxford Association for Prosecuting Felons. This group held



**Left, from top:** John Harvey's home, Pond Hall, Hadleigh, today.

A possible White Hart smugglers' barn next to the River Box. The upstairs windows may have provided an entry point for goods. A Queen Elizabeth I coin was recently found hidden inside, and old coins have also been found secreted in a wall in the main pub.

Maltings Farm and barns, Groton, in 1971. The Hadleigh Gang used its outbuildings to hide goods in 1745, and probably on many other occasions.

**Below, from left:** John Pixley was a prominent, notorious 18th-century smuggler and 'runner' (a swift transporter of contraband) operating out of Ipswich, Suffolk. He is best known for his transition from a criminal to a ruthless Customs officer, eventually using his insider knowledge to dismantle local smuggling rings. Mezzotint by John Faber Jr, after David Morier, 1749. © National Portrait Gallery, London.

Arrest of smuggler James Holt of the 'Benacre Gang' in Suffolk. He served as the parish clerk of Benacre Church while secretly operating a violent smuggling ring. He was hanged at Tyburn on 25 June 1752 at the age of 35.

His famous last words: "It is very hard to be hanged for smuggling."

doorstep as a 'gift' for a local official or clergyman to ensure they didn't report the midnight movement of packhorses through the village. Of course, there were people who genuinely disapproved of this tax avoidance, but I wonder how the smugglers kept them in check and out of their way as the packhorses streamed through their lanes?

Tina Loose





## *The Ghostlight Club*

### *Boxford Drama Group marks 100 years of Boxford Village Hall with a nostalgic theatrical mystery*

For three evenings in April, Boxford Village Hall was transported back in time to 1926 and transformed into *The Pavilion Theatre*, somewhere on the Suffolk coast.

On entering the 'theatre', audience members were guided to a specially constructed 'box office', and tables were charmingly dressed with flowers. Nineteen-twenties music playing in the background added to the nostalgic atmosphere.

This was Boxford Drama Group's contribution to the village hall's centenary year. Cleverly written by Mike Keith, it told the story of an abandoned theatre, almost destroyed by fire, and the reunification of a theatre troupe hoping to stage a play that circumstances had made impossible before. The gas light on the stage had continued to burn during the preceding years, which was very eerie.

Running parallel to this was an underlying grievance held by one of the cast members, Major Bernard Bagshawe (Joe Barrett), who felt that a

certain Captain Rupert Albright (Harry Hodson-Barnes) had shown cowardice in a battle they had both fought in during the Great War.

The nine-strong cast each played their part convincingly. Dame Sybil Langtry (Elaine Carpenter), the president of The Ghostlight Club, was firmly in control. Two younger would-be actresses, Verity Gaskell (Alison Barlow) and Daphne Bennett (Angela Tolputt), were a giggling duo, bursting into song, rather badly to start with, and dance at every opportunity.

'The Man from the BBC', Gerald Ashcombe (James Tolputt), turned up to convince them to perform it as a radio play, and brought with him Cedric Bowman (Mike Keith), who tinkled the ivories incessantly until he was told in no uncertain terms to stop.

Mavis Dodds, a former

make-up and costume lady (Frances Korabik), arrived wanting to put the record straight about the death of her brother at the disputed battle.

Finally, Lizzie Varney, or Lysandra Varnia as she preferred to be known (Camilla East), appeared, bringing with her an emotional, dramatic energy, and proceeded to coach the cast in voice projection. She fancied she was





in touch with the spirits and, at one point, 'cleansed' the audience with a few twigs.

This was not a comedy as such, and the audience needed to concentrate to follow the twists and turns in the plot. However, there were many light-hearted moments, mostly due to the barbed comments delivered by the Grumpy Major, played by Joe Barrett, aimed at the captain.

The conclusion was that the Captain had, in fact, been a war hero. This was brought to light by the discovery of a log book in the ruins of the theatre, belonging to a colleague of Mavis's brother. The mystery was solved, everyone was friends, and the cast had miraculously learned how to sing for the finale.

It was an excellent evening's entertainment and encapsulated the celebration of all the people who have enjoyed Boxford Village Hall over the past hundred years.

A special mention must go to the backstage members who worked behind the scenes, and without whom the show would not go on. Especially Janice Keith, who not only directed but sourced the costumes as well, and David Phillips, who built the piano from scratch, as well as the set and the magnificent box office.

*Well done, Boxford Drama Group!*

[www.boxforddramagroup.com](http://www.boxforddramagroup.com)

## The Red Rose to Reopen on 5th June

The Red Rose prides itself on being the hub of Lindsey.



Now running under the leadership of Jackie Ha, The Red Rose will reopen with delicious nibbles and a new menu crafted from produce from the kitchen garden at Nedging Hall.

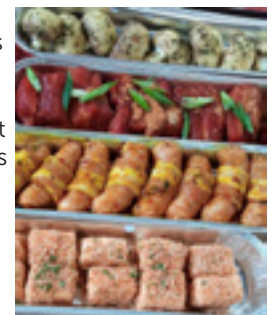
Jackie also manages The Crown at Bildeston, which is currently in the running for two awards: *Velvet Magazine's Pub of the Year* and *Muddy Stiletto's Best Loved Pub*.

The team looks forward to welcoming you back.

[www.thelindseyrose.co.uk](http://www.thelindseyrose.co.uk)

## BBQ Season at Hollow Trees

As the warmer weather begins to creep in, what more could you want than a delicious barbecue filled with local produce? Hollow Trees Farm Shop has all the components you will need!



Pay our farm butchery a visit and indulge in our wide selection of home-reared meat, from classic burgers, sausages and skewers to scrumptious Greek-style lamb koftas and ginger, lemon and chilli spatchcock chicken.

All the accompaniments you need can also be found in our farm shop and farm deli, with fluffy burger baps, the perfect local cheese, a range of fresh produce and some farm-made treats ready to be popped into your basket and taken home for a fabulous feast.

[www.hollowtrees.co.uk](http://www.hollowtrees.co.uk)



# Natural Boxford

## *Swifts, Swallows and Martins*

It's that time of year again - our Boxford swifts are back in the village, having overwintered in Africa where there is plentiful insect food. Now they are back here it is essential that we continue to do all we can to make sure there is enough food for them in their summer home as well.

*No Mow May* is crucial for allowing grasses and wildflowers to flower and seed, keeping the ground damp and fostering healthy insect populations. This is not just for swifts, but for many other birds, such as flycatchers, which are also becoming rarer, along with so many of our once-common birds.

If you pause for a moment in the centre of the village in the early morning, or around dusk in particular, you stand a good chance of seeing a group of swifts sweeping around at high speed and hearing their screaming calls as they collect insects on the wing. They store them in a pouch at the back of their throats, forming them into a pellet with saliva, which they can then regurgitate to feed their young. There are usually around three hundred insects in one pellet, but up to one thousand have been recorded.

*“Swifts are back in the village, sweeping around at high speed and collecting insects on the wing.”*

During our swift walk last year, we also discovered two populations of house martins in the village: one group on the Goodlands estate and the other on Ash Street. They also fly about in large groups, catching insects.

While swifts only land to nest, mate and feed their young, house martins will perch on wires, trees and buildings,

and can be spotted collecting mud from damp puddles, ponds and streams, which they use to build their distinctive cup-shaped nests under the eaves of houses, under ledges and on cliffs. Swifts and house martins are easy to tell apart, as swifts are dark all over, with a slightly paler patch under the throat and curved-back wings, so they look almost scimitar-shaped in flight. Their piercing calls are also very distinctive. House martins are glossy black above, with a white underside and rump and a short forked tail. They are smaller than swifts. Both swifts and house martins are on the red list of birds of conservation concern.

**Above:**

*Common swifts (*Apus apus*) flying against a sunset sky.*

**Opposite page, from top:**

*A house martin (*Delichon urbicum*) returns to the nest to feed its young.*

*Garden birds feeding from a hanging seed feeder.*



Trickier to tell apart when flying are swallows and house martins. Swallows are also blue-black above, with a creamy underside. They have a red forehead and throat, and a black band across their chest, although these details can be hard to see when they are flying against the light. Their tails are longer than those of house martins and sharply forked. They also fly in groups catching insects, perch together on wires, especially when gathering to fly back south, and make mud-shaped nests on outbuildings. Their full name is barn swallow, and they prefer farmland near water and often roost in reedbeds. With our drier weather, both swallows and house martins are struggling to find enough mud for their nests, so we can help by making sure we keep patches of earth wet on our land.

All three birds are summer visitors to the British Isles, overwintering in Africa. Swallows migrate as far as South Africa, and they will all return to the same nest sites. We have provided some additional nest boxes for our swifts, and if you have house martins' or swallows' nests on your house or outbuildings, please do leave them there so the birds can find them on their return.



## Join us for a Swift Walk

**Tuesday 30th June**

Meet at 8pm at the bottom of The Croft.

We will walk around the village to spot our swifts and house martins - and maybe swallows if we are lucky.

There are simple things we can all do to help. Leaving some grass longer, allowing wildflowers to set seed, avoiding pesticides, keeping a damp muddy patch during dry weather, and leaving existing nests undisturbed can all make a real difference. Even small gardens, verges and corners of land can provide insects, shelter and nesting materials if we let them become a little less tidy.

### New general bird feeding advice

The RSPB have issued new guidance for feeding the birds as it is being realised that some birds, finches and green finches in particular, are declining due to a contagious disease called *trichomonosis*: this is spread easily via crowded and unhygienic feeding stations, and grains, peanuts and seeds left out too long, getting damp and mouldy.

It is being recommended to stop feeding the birds peanuts and seeds between May and October when there is more naturally available for them – if, and it is a big if, we make sure we are leaving enough areas of natural habitat – this is where being over-tidy, strimming unnecessarily and not allowing wild areas causes real and lasting damage to our ecosystem by depriving our birds of food.

It is ok to continue with fat balls, mealworms and suet, while making sure that feeders and the areas around them are kept really clean and not too much food is put out at once. Moving feeders regularly also helps prevent food waste and droppings building up in one place. You can find more detailed information here: <https://tinyurl.com/feed-garden-birds>

Much love,  
Louise, on behalf of  
the Natural Boxford  
group.



## Spot the Difference



Swifts, swallows and martins are summer visitors, so look out for them from spring through to early autumn. They can be difficult to identify at speed, but their shape, colouring and behaviour give helpful clues.

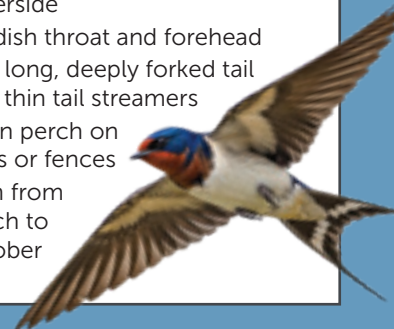


### Swifts

- Dark brown, often looking black against the sky
- Long, narrow, curved wings
- Fast, high flight with loud screaming calls
- Larger than Swallows and Martins
- Rarely seen perching
- Seen from April to August

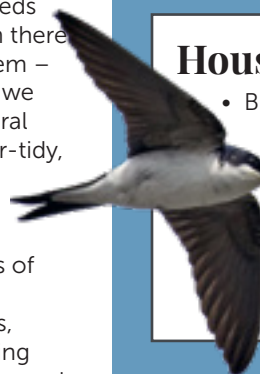
### Swallows

- Glossy blue-black back and pale underside
- Reddish throat and forehead
- Very long, deeply forked tail with thin tail streamers
- Often perch on wires or fences
- Seen from March to October



### House martins

- Blue-black above and bright white underneath
- Short, forked tail
- Often nest under house eaves
- Seen from March to October



### Sand martins

- Smaller than swifts, swallows and house martins
- Brown above and pale below
- Brown band across the chest
- Short, forked tail
- Often seen near rivers, lakes and sandy banks
- Usually seen from March to October



## The Shelley Centre

It's always a sad occasion when news reaches us at Shelley that someone who has benefited from our work, or has given so much of their time to the centre, is no longer with us. Recently, after hearing about losses like this, we've looked at how we can keep the memory of those we have lost alive, and we'll soon be planting some memorial bulbs as an ongoing tribute. We hope that a blaze of floral colour on the banks around our riding arena will be a perfect way to remember people who were very special to our teams.



In recent weeks, we've been remembering Ally, pictured above riding Ebony. Ally had ridden with us for many years - first on ponies at The Shelley Centre and later on our mechanical horse, Ebony.

We've also remembered Denise, pictured below leading Thomas. Denise was one of our volunteer team,



she had recently spent some time in hospital, where she sadly passed away. Their families very kindly asked for donations to The Shelley Centre for Therapeutic Riding in their memory.

We are so grateful to all those who gave so generously in memory of Ally and Denise, and their support will allow us to continue the work that meant so much to both of them.

There are many different reasons why people choose to leave a legacy gift:

- It's a simple and meaningful way to give.
- It costs nothing in your lifetime.
- It creates a lasting legacy that reflects your values.
- It can reduce inheritance tax for your loved ones.

We understand that, when making your will, it's important to think about your closest family and friends first. However, if, once those arrangements have been made, there is also to be a donation to charity, we are happy to provide the information needed, including our full legal name and charity number. We have a booklet with this information, and much more about our work. Please give us a call on 01473 824172 if you'd like it sent to you. We also recommend speaking to a solicitor when making or updating your will. Thank you if this is something you have already thought about.

[www.shelleyrda.com](http://www.shelleyrda.com)  
01473 824172

## French's Care Haven

While I am writing our news for the June edition, our charity is no further forward with the land and the solicitors, but I am still hoping we will be going ahead with the new land during the month of June. Fingers crossed, and I will keep you updated.

In our photo this month is Minstrel, one of our donkeys. He is a dear little man who is going through something some of us suffer with - arthritis. I recently had the vet X-ray his left shoulder, as this has changed shape and is causing him some difficulty at times. I just wanted to be sure there was nothing else going on, and the X-ray clearly showed it was his arthritis.

When I rescued him and three other donkeys over nine years ago, I accidentally found them while driving around looking for land to rent. I contacted the farmer whose land



they were on and asked why they were in such bad condition. He told me they had been dumped in his field two years before I came across them. All four donkeys had not had their feet trimmed over these years and Minstrel's was the worst. His right foot was curled up high and stopping him from being able to walk.

Once I rescued them from the farmer's field and brought them back to Hadleigh, I had my farrier come straight in to help the donkeys. My farrier at the time did a good job over the following months, bringing their hooves back to normal. The neglect Minstrel had suffered has, sadly, now in his elder years, permanently caused a problem for him. For so long, all of his weight had been shifted onto his left side to enable him to move around. The knock-on effect of this is now arthritis in his left shoulder and knee. Our vet has had to give Minstrel some medication to help him and we are keeping an eye on how he is on a daily basis.

I recently gave a talk to the Sudbury Retired Members Association. They were a nice group, the talk went well and Lucy, our therapy dog, made everyone aware she was there and went around saying hello to all the members. I would like to thank the members for their donations. If you would like me to give a talk at your members' club, then please get in contact with me. I would be happy to come along.

I am still looking for someone to help us organise future fundraising events. Please contact me if you would like the opportunity to make a difference to our charity's future, in this or any other way.

Jann  
07747 755 556  
[jann.turner@hotmail.co.uk](mailto:jann.turner@hotmail.co.uk)  
[www.frenchscarehaven.org.uk](http://www.frenchscarehaven.org.uk)



# Elaine Carpenter

N.R.H.P., C.H.P., Dip Psychology

## HYPNOTHERAPY

Negative emotions such as anxiety and depression can overwhelm us by rippling out and affecting our whole lives

Hypnotherapy can help you discover how to use the power of your mind to free yourself from fear and gain control back of your life.

I have over 30 years of experience as a hypnotherapist, helping people to overcome a wide range of emotional, mental & physical problems.

Call me for an informal chat to see how Hypnotherapy can help you.

Now available at KERSEY MILL & BOXFORD

**Phone: 01787 210 601**  
**Mobile: 07929 744 072**

**Moving?**  
Call us on **01787 377489**

**Todds Removals**  
& Todd Storage  
a reliable local service you can trust!

- Removals
- Storage
- Home or Business
- Packing materials
- Packing service
- UK, Europe and beyond

www.todds-removals.co.uk

MEMORIALS

# LUXSTONE

WE HAND CARVE  
ANYTHING IN STONE

Memorials, standard and bespoke  
Carving - Stone Signs - Nameplates  
Letter Cutting and Carving Courses

Stour Valley Business Centre, Brundon Lane,  
Sudbury, Suffolk CO10 7GB  
Tel 01787 371570 E mail info@neilluxton.co.uk  
www.neilluxton.co.uk

Stoke by Nayland  
RESORT

JOIN US FOR OUR

# SUNDAY CARVERY LUNCH

OUR CLASSIC CARVERY SERVED EVERY WEEK, 12:30PM - 3:00PM

Gather family and friends for a hearty Sunday roast in our welcoming Lakes Restaurant.

*Enjoy a mouth-watering selection of perfectly roasted meats, all the traditional trimmings, and tempting desserts, prepared using the finest local and seasonal ingredients. Good food, relaxed surroundings, and no washing up - Sundays are sorted!*

Scan the QR code to book your table online now



# Launching Project 400

*Groton History Society invites local people to help mark the 400th anniversary of the Winthrop Fleet and explore the remarkable local links with early New England.*

Doesn't time fly in history? No sooner was it 1630 than 2030 appears on the horizon, 400 years later. As the anniversary draws closer, Groton History Society has decided to launch *Project 400* - a working title for now - to mark the 400th anniversary of the Winthrop Fleet leaving England on 8th April 1630 for New England and a new life in a faraway new world.

For many of our local residents, this was a dangerous journey into the unknown, yet one also of hope, of opportunity, of escape to freedom: freedom to be your own man, a free man (these were highly patriarchal times and it was all 'about the man' and maybe 'the boy', I am afraid to say!), freedom to worship how you liked, freedom to start again, freedom to own land - freedom!

Much of the focus on this great migration understandably centres on

the leadership of John Winthrop, of Groton and later Boston. While Project 400 will include his important story, we also want to discover and share the many other stories of emigrants from the Box River area.

John Winthrop recorded that around 100 people from Groton and surrounding parishes within a ten-mile radius made the journey in 1630. Looking more widely, up to 172 people left Suffolk and up to 116 left Essex, with more following in later years.

From my own research, I have found the names of 82 people from the parishes of Groton, Edwardstone, Boxford, Little Waldingfield, Kersey, Assington, Polstead and Nayland. These include 37 from Groton, 11 from Boxford, ten from Assington and 15 from Nayland. Of the 82, 32 were children! This was not only a 'man' thing in reality - It was a family trip!

Whole families looked to emigrate across the Atlantic, the largest of which was the Thomas French family from Assington, all 9 of them!

Key occupations were represented, although we do not have complete records for the vast majority of the

**Above:** An illustrated view of Governor John Winthrop's arrival in New England in 1630, a journey that marked the beginning of a new life for many families from Groton and the surrounding villages.

**Opposite:** John Winthrop of Groton, who led the 1630 migration to New England and became Governor of the Massachusetts Bay Colony.



passengers. George Phillips was the reverend at Boxford, before taking sail. Robert Ford, Robert Pond, a Mr Brease and Richard Church were carpenters. Richard Gridley was a mason. William Gager was a physician and Robert Reynolds was a shoemaker. John Winthrop was a lawyer. All absolutely necessary skills that would be needed. They would be starting from scratch, so everything had to be built, planted, and protected.

The Winthrop Fleet of 1630, comprised of 11 ships, departing in two waves. On 8th April 1630, the *Arbella*, *Ambrose*, *Hopewell* and *Talbot* set sail. All bar the *Hopewell* carried passengers. The remaining ships - *Charles*, *Jewel*, *Mayflower* (not the pilgrim's *Mayflower*), *Success*, *Trial*, *Whale*, *William* and *Francis* - followed in May. Passengers were carried on the *Jewel*, *Mayflower*, *Success* and *Whale*. In all, up to 700 passengers were carried to New England in the Winthrop Fleet of 1630.

Some returned home to England, some probably died on the crossing, others died within the first year or two. The survivors made a new life, suffering

immense hardship in the early days of their settlement in New England. The first winter was harsh: accommodation was invariably a wigwam structure for those not in leadership positions. Everything had to be created from scratch. Home off the free and land of the brave - for these folks it was, but at a cost.

Our very own Box River area contributed massively to the founding of America and the future United States. The hopes and prayers of those early immigrants can be felt today. They helped shape American heritage nearly 150 years before 1776, and this is something worth remembering as the United States approaches the 250th anniversary of its independence.

We are excited to begin this project in the coming weeks. It will be co-led by Groton History Society and Groton Parish Council. We hope to work with anyone who is interested, including those with family links to the Winthrop fleet and those who would simply like to learn more or become actively involved. We will also be reaching out to local groups and parishes across the Box River area. Contact has already been made with some groups in New England, and we hope to extend those links further.

At this stage, we have a clean sheet of paper and all ideas are very welcome. What would you like to see included? Talks, exhibitions, walks, school projects, family-history research, links with New England, or commemorative events are all possibilities.

We would love as many people as possible to be involved in some way. We would also welcome volunteers to help steer and run the project. Would you be interested in helping us? Please email me if you are interested.

Nigel Chapman  
nigeljchap@gmail.com

## Upcoming Events

**Victoria and Abdul**  
NEW DATE! Friday 26th June

Hosted by Shrabani Basu, journalist and author of the book that was adapted to produce the 2017 feature film of the same name. Shrabani is a frequent commentator on the BBC, ITV and Chanel 4 on Indian History and Empire.

**July and August:** We will be taking our usual summer break.

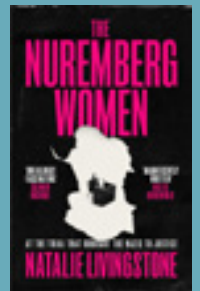
**September to December:** Further dates and topics will be announced over the coming months, so please check future issues of *Box River News* for updates.



## Recommended Reading, Listening & Viewing

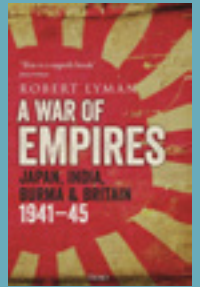
**'The Nuremberg Women'** by Natalie Livingstone.

Includes the striking endorsement from Peter Frankopan: "This transforms what we think we know."



**'A War of Empires: Japan, India, Burma and Britain 1941-45'** by Robert Lyman.

The story of the 'Forgotten' theatre of WW2, yet arguably its most amazing.



**'The Falklands War' series of podcasts from The Rest is History Podcast team.**

Similar backdrop and times to today. Could this happen again before 2032??



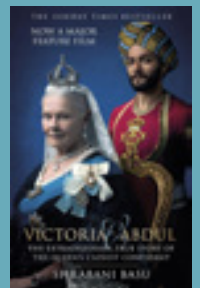
**'The Indian Uprising 1857' - a podcast series from the Empire team.**

A fascinating listen ahead of Shrabani Basu's talk.



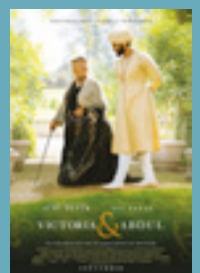
**'Victoria & Abdul' by Shrabani Basu.**

The remarkable true story of Queen Victoria's friendship with Abdul Karim, written by the speaker joining Groton History Society in June.



**'Victoria & Abdul' - feature film, 2017.**

The film adaptation of Shrabani Basu's book, starring Judi Dench and Ali Fazal, and a fitting watch ahead of the June talk.





# Wildflower Verges: Love Them or Hate Them?

*A local look at why our longer grass matters  
- for flowers, insects, food and the wider countryside*

In all my years as an environmental enthusiast, I've not come across anything quite as controversial as wildflower verges, including *No Mow May*. Some people call this 'rewilding', but in a village setting it simply means reducing how often certain areas are cut, giving native wildflowers and grasses already in the soil a chance to grow, flower and support wildlife.

My little family moved to Boxford three years ago, so we are real newcomers, but I feel blessed every day when I walk through the village and along the farmers' footpaths. Nature is my tonic - it helps me unwind and reminds me to be grateful for the beauty around us. I imagine all of us value the peace, the landscape and the sense of community that come with living in our rural village.

But beneath the beauty lies a quieter truth: nature in the UK is struggling,

and our district and county councils now have legal duties to help reverse that decline. Understanding why this matters, and what is being done locally, helps us all play a part in looking after the place we call home.

## **What is the current situation?**

I started driving in 1997, and my windscreen used to be covered in dead insects after a summer journey.

Buglife, also known as The Invertebrate Conservation Trust, runs the Bugs Matter Survey, sometimes described as 'splatometer' research, asking drivers to record how many insects are squashed on their number plates after a journey. The results are shocking: insect numbers on UK number plates have fallen by around 60% since 2004, and in some regions the decline is even steeper.

The *State of Nature Report*

2023 offers the clearest and most comprehensive picture of the UK's wildlife, and its findings are sobering. It confirms that the UK is now one of the most nature-depleted countries on Earth, following decades of habitat loss, pollution, climate change and changes in land use. Species abundance has fallen by 19% on average since 1970, and nearly one in six species assessed is now at risk of disappearing from Great Britain altogether. Wildflower meadows, once a defining feature of our countryside, have declined by 97% since the 1930s, stripping away vital food sources for pollinators.

## **So why does this matter?**

Over 75% of major global crops depend on animal pollination, and in the UK alone, insect pollination contributes over £600 million a year

to crop production. When pollinators decline, crop yields fall, supply becomes less stable and food prices rise.

This year there has been an abundance of oilseed rape grown locally, as farmers have managed to get on top of a rather pesky infestation of flea beetle. Oilseed rape is used in cooking oil, processed foods, salad dressings and margarines. It is also used as a high-protein livestock feed and as a biofuel alternative to diesel. It is a crop that benefits from healthy soils and thriving pollinators, which means the bees and insects in our gardens are directly linked to the food and farming economy on our doorstep.

The bees and insects in our gardens and community areas support crops in the fields through pollination. Without pollination, crops such as apples, strawberries, beans, courgettes, tomatoes, oilseed rape and many nuts would produce fewer fruits and seeds. Some would fail almost entirely. Even crops that don't rely on pollinators can benefit because pollination improves size, shape and quality. With Copella's orchards on our doorstep, it is wonderful to think that a single bee visiting a flower in my garden could be playing its tiny part in an apple harvest that becomes juice enjoyed nationwide.

Even the smallest fragments of habitat play a role in supporting pollination and food production. Tiny strips of unmown grass act as ecological corridors, helping insects move safely between feeding and nesting sites. More bees and butterflies mean more wildflowers, which in turn support more insects, feeding the birds, bats and small mammals we all love to see. Blue tits can raise larger broods when caterpillars are plentiful,

hedgehogs thrive when beetles and worms are easy to find, and bats depend on healthy insect populations to survive. By helping the smallest creatures we strengthen the entire web of life around us.

#### **What are our councils doing?**

Under the Environment Act 2021, councils in England must follow the Biodiversity Duty, meaning they are legally required to consider nature in their decisions and take practical action to conserve and enhance biodiversity. Babergh District Council's Biodiversity Duty Report sets out actions including improving habitats on council-owned land, supporting local biodiversity initiatives and ensuring planning decisions protect and

*“The flowers were already there, waiting for the chance to bloom”*

enhance wildlife.

Babergh and Mid Suffolk District Councils have adopted a range of policies to deliver this duty, including biodiversity action planning, habitat creation and guidance for developers through Biodiversity Net Gain. Here in Boxford, we have already seen some of this in action through a partnership between Natural Boxford and Richard, the Biodiversity Manager at Babergh and Mid Suffolk District Councils. Together, they identified areas in the village where the mowing regime could be changed to allow existing native wildflowers and grasses to thrive - plants that were already there, just waiting for a chance to grow rather than being cut every month. These spots were carefully chosen so they would not affect visibility for drivers or block pavements, and the council has consulted emergency services about fire risk, who raised no concerns. What we are seeing now is not something that has been planted - it is nature quietly returning the moment we step back and give it space.

At county level, Suffolk County Council is responsible for producing the Local Nature Recovery Strategy (LNRS), a legal requirement under the Environment Act 2021. For Suffolk, this is shared with Norfolk and developed by the Norfolk and Suffolk Nature Recovery Partnership, a collaboration of over 100 organisations. The

strategy helps identify where habitat restoration, wildflower meadow creation, hedgerow strengthening, wetland recovery and pollinator corridors will have the greatest impact, so that wildlife is not left in isolated fragments but can move, feed and breed more successfully.

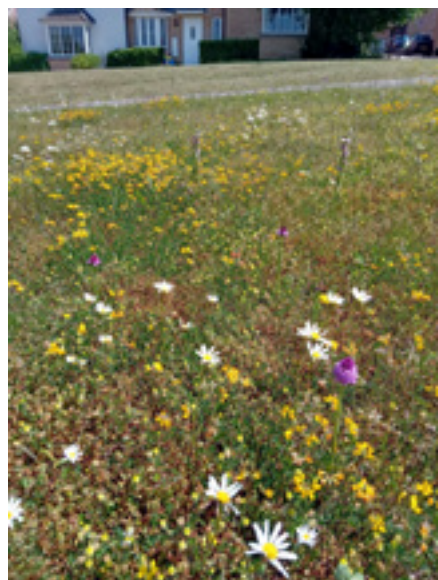
#### **What can we all do?**

The key words for what we can do as a village are: bigger, better, more connected. From a window box, to a few flowering shrubs such as lavender, to a part of your garden set aside as a wildlife zone - everything helps. These small pieces become stepping stones that link the larger habitats around us, giving insects, birds and small mammals the corridors they need to move, feed and thrive.

Over the last three years, I've been turning my own garden into a small haven for wildlife, and it has cost me very little. I built a tiny wildlife pond and watched newts arrive within a month. I sowed wildflowers at the end of the garden using cheap seed boxes from QD, and my garden becomes aflutter with butterflies as the plants flower. I made a bug hotel from two pallets a neighbour was throwing out and some of last year's organic garden waste. I left a few patches of rubble for beetles and solitary bees. Perhaps the simplest and most effective thing I've done is put out shallow bowls of water with a few stones in them, so insects can drink safely. These tiny changes have brought me countless hours of joy from gardening and watching new visitors arrive.

I love the idea that small actions, shared across a village, can become something powerful, enjoyed by us all.

*Becky Baines*  
Managing Director, Green Growth Ltd  
[www.greengrowthlimited.co.uk](http://www.greengrowthlimited.co.uk)



**Opposite page:** A butterfly among Boxford wildflowers, photographed by Becky Baines - a reminder of how native plants can support pollinators when given space to grow.

**Left:** Photograph by Richard Parmee, Biodiversity Manager at Babergh and Mid Suffolk District Councils, showing a meadow management area in Stowmarket. More than twenty native flowering species were counted on a brief visit, including bee and pyramidal orchids. Nothing had been sown - the flowers were already there, waiting for the chance to bloom..



# *When Every Minute Counts*

## *What defibrillators do, how they work, and why no one should be afraid to use one.*

Most of us hope we will never need to use a defibrillator, but in a medical emergency, knowing what one is, where to find one, and being willing to act quickly can make a real difference.

A defibrillator (sometimes called an AED - *automated external defibrillator*) is a device used when someone is in cardiac arrest. Cardiac arrest means the heart has stopped pumping blood around the body properly. The person will be unconscious and not breathing normally, or not breathing at all. This is always a 999 emergency.

There are several public access defibrillators across the Box River area. In Boxford, they can be found at The Fleece and the playing fields pavilion. Newton has five dotted around the village. Little Waldingfield has one at the Parish Room and another at the playing fields. Edwardstone has one in the telephone box at Mill Green.

When you call 999 the ambulance call handler will tell you what to do, including how to start CPR and where

the nearest registered defibrillator is at that time. If the defibrillator is in a locked cabinet, they will also give you the access code.

It is worth familiarising yourself with an AED now rather than trying to work everything out under pressure. In a real emergency, every minute feels faster than usual. You will not need to remember complicated instructions, but it helps to have a simple picture in your head: phone 999, start CPR if

told to do so, send someone for the defibrillator if possible, then follow the machine's voice prompts.

One of the things that stops people from using a defibrillator is the fear of doing something wrong. In fact, public access defibrillators are designed to be used by ordinary members of the public. Once switched on, the machine talks you through each step: it tells you where to place the pads, when not to touch the person, and whether a shock



## Boxford First Responders

Boxford and surrounding villages are served by the 3PR Community First Responder Scheme. The team is made up of trained local volunteers who may be alerted by the ambulance service in emergencies. They are not contactable directly - always call 999 in emergencies.

The team is always keen to hear from people interested in joining them. For more information, contact team leader Alistair Horne: [alistair.horne@eastamb.nhs.uk](mailto:alistair.horne@eastamb.nhs.uk).

is needed. You cannot accidentally shock someone who does not need it. The defibrillator checks the heart rhythm and will only allow a shock if it detects that it might help. If no shock is appropriate, it will not give one - all of the important decisions are made by the machine.

CPR is just as important. Chest compressions help keep blood and oxygen moving around the body until the ambulance arrives or the defibrillator can be used. The 999 call handler will talk you through CPR over the phone. Even if you have never done it before, doing something is better than doing nothing.

No one wants to imagine a cardiac arrest happening at home, in a shop, in a pub, or on a village footpath, but emergencies do happen, and the person nearest at the time may be the one who can make the biggest difference in those first crucial few minutes.

The best time to learn where the defibrillators are is before you need them. The best time to learn CPR is before someone collapses.

For anyone who would like to feel more confident, there is a free CPR and AED awareness course coming up in Boxford. The session is being run by the East of England Ambulance Service NHS Trust and will take place on **Thursday 11th June** at 7pm at The Fleece, Boxford. To reserve a space, email [jenny@suffolkmedicalclinic.co.uk](mailto:jenny@suffolkmedicalclinic.co.uk).

The course is a chance to learn lifesaving skills in a calm setting, rather than trying to take everything in for the first time during an emergency. You do not have to be a first aider, a medical person, or especially brave. You only need to be willing to learn what to do.

## Your Next Read

There have been some fantastic new books on the shelves over the past few weeks, with something for every kind of reader. Here are six worth picking up.

### **John of John** by Douglas Stuart

The Booker-winning author of *Shuggie Bain* sets his third novel on the Isle of Harris, where broke art-school graduate Cal Macleod returns home to his preacher father, a strict community of Gaelic-speaking sheep farmers, and a grandmother who swears like a sailor.

Reviewers have queued up to call it his best yet, with *The Scotsman* saying it would hand Stuart another Booker on the spot.

### **Hunger and Thirst** by Claire Fuller

A gothic departure for the Costa-winning novelist. In 1987, sixteen-year-old Ursula moves into a squat with a dark history. Decades later, now a reclusive sculptor, her past catches up with her. Slow to start, then quietly devastating.

### **The Book of Birds** by Robert Macfarlane and Jackie Morris

Seven years in the making: *The Book of Birds* is a tribute to 49 endangered or declining British birds, paired with Morris's watercolour-and-gold illustrations. The duo behind *The Lost Words* organise the book around what they call the seven wonders of bird life: nest, egg, beak, song, feather, flight, and migration, with each section pulling together stories, myths, and threats around a different cluster of species. *Country Life* praised the way it recasts birds as 'co-creators of our world' rather than specimens to identify. A beautiful book to gift.

### **The Midnight Train** by Matt Haig

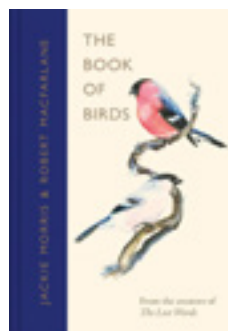
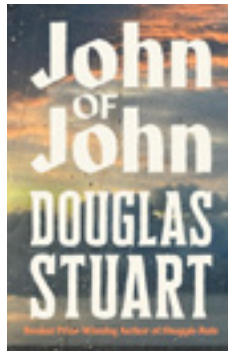
Matt Haig returns to the world of *The Midnight Library* with *The Midnight Train*. After his death, elderly bookseller Wilbur boards a train that carries him back through the moments of his life with Maggie, the wife he lost through his own mistakes. A tearjerker, and unapologetically so.

### **I Hear a New World** by Alan Moore

Alan Moore continues his *Long London* sequence, with this sequel to *The Great When*. It is 1958, the Notting Hill riots are in the air, and Dennis Knuckleyard is pulled back into the magical shadow-version of the capital when his old crush Grace Shilling returns there to investigate strange happenings. Reviewers of the first book praised Moore's prose as a riot of rhyming slang, anachronism, and inventive metaphor, and the new novel keeps that style going. Fans of the first will need no further persuasion.

### **Other People's Children** by Ben Faccini

Faccini's new book is a quieter literary novel and his first in nearly two decades. The narrator Tommaso is balancing a job that takes him abroad, a girlfriend with two unruly sons, and his eccentric Italian grandmother Alma, whose unsettled memories are starting to reveal a wartime past she has kept hidden. The story moves between the domestic chaos of modern London and the Italian resistance during the WWII. Reviews have called it generous, intelligent and beautiful, and it has been singled out for the quality of its scene-writing. A novel about the families we make as well as the ones we are given.





# Notes from a Beekeeper's Diary

---

*Tony Rand reflects on the season of swarms,  
& the instinctive journey that gives a colony new life.*

Looking around, it seems that this year everything in nature is at least a fortnight earlier than usual. The bright yellow flowers of rapeseed crops are already well over, and brambles are starting to show colour.

There is an old beekeepers' saying: "a swarm in May is worth a load of hay, a swarm in June a silver spoon, a swarm in July, let them fly." But the bees had started to swarm well before the end of April, so make of that what you will.

There was a time when swarms had real value. As early as the 10th century, prices were fixed by law, depending on whether they were first swarms, second swarms, called casts, or third swarms. You could even make money by alerting a beekeeper to a swarm. And the sums involved were not inconsiderable. A penny's worth

in those days was equivalent to three figures of pounds nowadays. All that was swept away with the Norman Conquest, when everything became the property of the Crown, or those in the King's favour.

*"A swarm  
in June, a  
silver spoon."*

In medieval times, beekeepers would try to attract flying swarms by 'tanging', or rhythmically beating a metal object, such as a cooking pan, with another.

As late as the 17th century, engravings depicted whole families outdoors banging away furiously together. Indeed, beekeepers in some parts of the world are still convinced this is an effective way of attracting, or calling down, a swarm. The lore of tanging still has staying power.

Believers say the crash must come from copper utensils, or that timing is all-important, or the swarm must be airborne for tanging to work. To the believer, everyone who fails is simply not doing it properly. Me? I'm strictly agnostic.

What we do know for sure is that when bees were kept in straw skeps, these were undersized to encourage swarming. Rural beekeepers could not afford sugar to maintain their colonies over the winter months, and honey



could only be extracted from the skep by destroying the colony within. So swarms were encouraged to boost the bee population. At the end of the season, surviving colonies were left with their stores for the long, cold months ahead, before warmer weather returned.

Swarming is, and always has been, a natural phenomenon and an essential part of the honeybee life cycle. A colony is a super-organism, where all individuals are interdependent. There can be only one queen: the only bee in the colony capable of laying eggs that can develop into viable adult offspring. In order to create a new colony and ensure continuation of the species, she must leave the nest, accompanied by perhaps one half of the flying adult bees, and form a new

colony elsewhere. They form a cluster around the queen while scouts go looking for a suitable location to create a new nest. Once found, the cluster breaks up and heads for the chosen spot en masse: an impressive sight like a comet, accompanied by the roar of maybe twenty thousand wings.

Before swarming, the bees form swarm cells. From these, the first queen to emerge will take over the old colony with the remaining bees. The new virgin queen has around three weeks to mate successfully and start her lifelong egg-laying mission. If the weather during that period is so bad it stops her flying, the old colony is in



peril. If she is reluctant to embark on mating flights, she will be physically forced out by the other bees.

Meanwhile, the swarmed bees are faced with the task of establishing a new nest. Before leaving their previous home, they will have gorged themselves on honey. Once settled in their new home, the honey they brought with them is used to build honeycomb for the queen to start laying. At the same time, they must forage and collect pollen and nectar to feed the colony, nourish the queen and provide for the larvae, which will in turn grow to replace the swarmed workers and drones. And so, one colony becomes two.

Swarms are essential for the perpetuation of the species, but in the wild their chances of survival can be low. If you do come across a swarm, please contact a local beekeeper or me on the number below. Time is of the essence. We will gladly collect the bees and rehome them, so they have the best possible chance to survive and prosper.

*Tony Rand*  
07503 164 823



*The Red House*  
— RESIDENTIAL HOME —

A fine Georgian building set within a beautiful garden, offering a sanctuary of peace and security within the centre of Sudbury, offering all the necessary care and attention for those who wish to spend their retirement and later years in a warm and caring atmosphere.

*Contact Us*

Meadow Lane, Sudbury, Suffolk, CO10 2TD  
Telephone: 01787 372948  
[www.redhousesudbury.co.uk](http://www.redhousesudbury.co.uk)



# The Blooming Garden

---

## *Climbing the walls*

If your garden is quite small like mine, then vertical gardening is the way to go. No wall, fence or tree is left unadorned in my little plot. And in June, it is a wonderful way to bring



fragrance to every corner. On the fence in a sunny corner I have *Dregea sinensis*. The *sinensis* part of the name tells you that it comes from China. I have lost a few of these beauties over the years as they don't always survive a very cold winter; they need a very sunny, south-facing position. If they are happy they grow quickly and I have to admit that pruning them is tricky as they ooze a sticky white latex-like sap when they are cut. I am trying to keep mine reasonably compact by weaving the stems together. But they are worth the trouble as the scent is intoxicating and pervades the garden. My plant came from a cutting from a friend and they are quick and easy to grow from cuttings. The clusters of star-shaped flowers look remarkably like hoyas to which they are related. The leaves are different though as they are felty. *Dregea* used to be known as *Wattakaka* and I think that *Dregea* is rather a boring alternative but one must keep

up with modern plant taxonomy which moves at a dizzying pace.

For more June scent, honeysuckle is essential. For some reason it is called '*chèvrefeuille*' in French which means goat's foot. I think I prefer Shakespeare's 'woodbine', or I would if the name hadn't been adopted by a particularly nasty brand of cigarettes which was launched as long ago





as 1888. I wonder if they are still made. It is funny how flowers named after food are appealing and I love *Lonicera periclymenum* 'Rhubarb and Custard'. The purple buds open as pink flowers which fade into yellow as they mature and the two-tone effect looks a bit like rhubarb and custard if you have a vivid imagination. The flowers are highly scented and the plant is reasonably compact growing to about 2 metres. I grow it with the rose 'Phyllis Bide' which perfectly matches the colour. Two other highly scented honeysuckles to look out for are *Lonicera periclymenum* 'Graham Thomas' and *Lonicera periclymenum* 'Scentsation'.

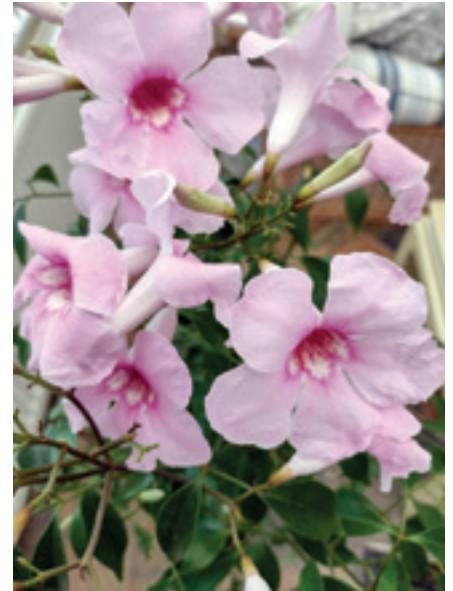
Obviously, I haven't got room here to mention all the amazing climbing and rambling roses that I have crammed in here. Rambling roses generally grow much bigger and they bloom just the once in a gloriously spectacular flush. They need large trees or walls. Some ramblers are repeat-flowering and this is another reason that I love 'Phyllis Bide' so much as she keeps on giving.

Climbing roses are best for smaller spaces like pillars or arches. Today, I am going to feature just one climbing rose that I first fell in love with when I

saw it climbing a wall in the wonderful rose garden at Mottisfont Abbey in Hampshire. If you love roses and have never been then you have a treat in store; Mottisfont is well worth a visit. Of all the glorious roses I saw there, the memory of 'Lady Waterlow' stayed with me. And I now have it in my garden here. It has dark pink flowers which open into loose, blowsy flowers which are salmon pink with yellow at the base. It blooms all summer long. It is a Tea Noisette and one of the best roses produced by the Nabonnand family in France. Their Tea Noisettes were often named after wealthy aristocrats. This one was named after an American heiress who, after a whirlwind romance, married Sir Sydney Waterlow when she was thirty-three and he was a sixty-year-old, with eight children. I'd like to know the story behind that. Whatever the story, it is a fabulous rose and though the early Tea Noisettes have been largely superseded these days, she remains justly popular. And she smells wonderful.

*“The scent is intoxicating and pervades the garden.”*

Another climber which has a really intoxicating fragrance is *Trachelospermum jasminoides* which many people call the Star Jasmine. It is not a jasmine at all, in fact it is not even related to the jasmine family; 'jasminoides' simply means jasmine-like. It needs full sun to flower well and the sun also encourages them to produce beautiful red foliage in winter. The flowers are white although there is a yellow-flowered one called



*Trachelospermum jasminoides* 'Star of Toscana'. *Trachelospermum asiaticum* flowers earlier than *jasminoides* but it doesn't have such big clusters of flowers. It does colour well in autumn though. There is a pretty pink version of *Trachelospermum asiaticum* called 'Pink Showers'. I have one with lovely variegated foliage splashed with yellow and red called *Trachelospermum asiaticum* 'Summer Sunset'. So far it hasn't bloomed but I don't mind as the leaves are so pretty.

I am going to finish with a climber which is probably not hardy but it is so pretty and brings a touch of the tropics to the June garden. I grow it in a large pot up a tripod of tall bamboo canes. It has to live in the conservatory in winter and it needs a regular haircut as it wants to grow enormous. It is called *Pandorea jasminoides* and it has clusters of large, pink, fragrant flowers. If you have space I really recommend it to bring an exotic touch to your summer garden.

*Chloris*

**Opposite page, clockwise from top:**

*Star jasmine, Trachelospermum jasminoides.*

*Lonicera periclymenum* 'Rhubarb and Custard'

*Dregea sinensis.*

**This page, clockwise from top left:**

*Rosa* 'Phyllis Bide'

*Pandorea jasminoides*

*Trachelospermum jasminoides*

*Rosa* 'Lady Waterlow'.



# Feedback From Robert Lindsay

## Suffolk County Councillor for Cosford Division

I'm delighted to say that I am your new Green Party Suffolk County Councillor.

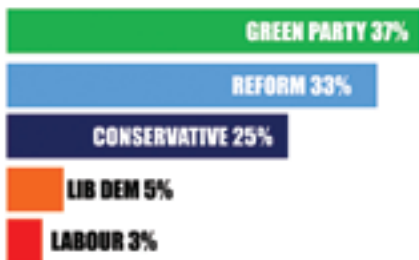


I'd like to thank all those who supported me in the

county council election on May 7th for the newly enlarged Cosford division. From speaking to so many people on the doorstep, I knew it would be close between me and Reform, and indeed it was.

It was a bit nerve-racking at the count to be standing there alongside the Reform candidate, both of us watching the Reform pile of votes mound up alongside what looked like a very similar-sized pile of Green votes.

### County Council election result in Cosford 2026



Boundary changes ahead of the election put Boxford, Little Waldingfield, Groton, Edwardstone, Lindsey and Milden into Cosford, the division I have represented for nine years.

So, to you, the readers of this magazine, I will be something of a novelty, so perhaps I should tell you a bit about me and my priorities as a county councillor.

They could probably be summed up in three points:

1. Holding the administration to account and letting residents know what is being done in their name.
2. Getting better bus services for our area, which is so deprived of public transport
3. Safer roads and streets where people want to walk and live.

I've had success in all three of those over the years in the 18 villages I have been representing so far. With regard to buses, I am now very much aware that there is £27 million from central government for Suffolk to spend on new bus services over three years,

and I am keen to ensure some of that money gets to our area, where bus routes and services are too few and far between.

Holding the Suffolk administration to account is even more important now there is a new Reform-led administration.

Across the county, the elections cut Conservative councillor numbers down from 55 to just 9 with Reform winning 41 out of 70 seats, enough to replace the Conservatives as the ruling party, forming a cabinet and administration on their own.

Greens increased seats from 9 to 13, making us the official opposition - while LibDem and Labour seat numbers, already low, more than halved.

Reform	41	LibDem	2
Green	13	Labour	2
Conservative	9	Independent	2

As I write, we still do not have much of an idea of what Reform's policies are for best serving residents of Suffolk. They have made noises about suing the government over its planned rejig of local authorities, due to happen in May 2028. That rejig will decentralise Suffolk down into three new unitary councils, abolishing both the county and the district councils like Babergh.

Whatever you think about this - and I feel that devolving Suffolk's remote decision-making to areas that are smaller and closer to the people they represent is, on the whole, a good thing - the government appears to have followed due process.

My view is that it would be in the best interests of Suffolk residents for the county council's administration to focus its efforts in the final two years of the county council's existence, working with district councils to ensure that the three planned new unitaries work as effectively as possible from day one. If that does not happen, their birth is likely to be chaotic.

I look forward to working with you.

*Robert Lindsay*  
[Robert.Lindsay@suffolk.gov.uk](mailto:Robert.Lindsay@suffolk.gov.uk)  
Tel: 01449 741959 / 07947 127693

# Feedback From Bryn Hurren

## Babergh District Councillor for Box Vale Ward

So crazy now to think that as we approach June we have gone back to March weather. The rain may help save the sugar beet before the ever-

prevalent winds dry the land out again, but growing plants need sunshine as well. At least the winter-sown crops look good, but the spring-sown ones need a temperate climate to exist and flourish and go on to harvest to feed us and others as well. One thing is certain: growing food has become a serious challenge for all our farming friends and we as a country cannot afford for them to fail in this ever-progressive climate-changing scenario. It is so important now that we grow different things to feed, heal and sustain us into the second quarter of this century and that our farmers are given the backing and resources to do so.

Stop building on our greenfield sites and yield-bearing land. We don't actually need them to keep up our much-needed housing stock, and we should place the new-generation solar panels on our roofs, not littering fields, especially in a tourist area like Eastern England. Somebody must know this makes sense.

As most folks must have noticed we have had the local county council elections to elect new councillors who will decide who looks after the maintenance of most of the county highways, including all the little lanes and even the byways and footways. Our education provision, much of our health provision and social care also come under the county council umbrella. It is a tough job and changes will need lots of hard work and explanations to the 750,000 residents of our county which we are all so lucky to live in. I pray that they do a good job and have clear plans to deliver all they were elected to do!

The elections were superbly run, as normal, by the district council, of which I am still a member, and it's business as usual for us, doing what we always do for our constituents. Just a reminder that Babergh DC is run by a coalition of Green, Independent and Lib Dem councillors, and at our AGM on 12th May we elected Cllr Lee Parker as Chair of Council, Cllr Deborah Saw as Leader, Cllr Simon Dowling as Chair of Planning, Cllr Mary McLaren as Chair of Scrutiny and myself as Chair of Audit and Standards. Let's hope I keep a steady hand on both and, after seven years in this role, I surely will. We have not had many cases of misconduct that have had to have a separate official hearing during the past few years and I hope that this continues for the next two years of both councils. However there have been some quite shocking cases of serious misconduct from some newly elected councillors who have violated the general code of conduct that is just about being

competent, polite and decent to all others one meets and works with in an elected role. Why is this so hard for some?

So thrilled that my beloved footie team, Ipswich Town, which I have followed for 60 years now, have made it back once again to what is called the Premier League. We can but hope that this time the behaviour on the pitch matches the name, and that we see more sportsmanship and less petulance and faked injuries when an opposing player spots a cloverleaf on the perfect Portman Road pitch and goes over writhing in agony. It seems that like in politics, the higher the monkey climbs the tree the more he shows off his arse to those below. Not a good look.

Have a great summer ahead and enjoy what is good all around us.

If you need your old district councillor, you can contact me using the details below, or just stop me in the street.

Bryn

[bryn.hurren@babergh.gov.uk](mailto:bryn.hurren@babergh.gov.uk)

Tel: 07771 508348

## BOXFORD

### *Summary of Council Meeting 28<sup>th</sup> April 2026*

#### **Message from the chair**

Cllr Warren informed the meeting of the sad news that Cllr Peter Watt had recently passed away and wished to send condolences to Peter's family.

#### **District council report**

DCllr Hurren's full report was given for the annual parish meeting and can be found on the BPC website.

#### **County council report**

CCllr Finch's full report can be found on the BPC website.

#### **Update on 20mph speed limit**

Amendments to the draft plan were sent to the highways officer, nothing has been received back. Action: Cllr Watts / Troke to chase. It was asked who would be paying for the suggested works; SCC has already mentioned that they will not fund. It was advised that once the budget has been received, it can be worked out how to raise funds.

#### **Parking issues at Brook Hall Road**

Cllr Hurren will be asked to look into planning permission. A recommendation was given to the manager of the care home to make an application for the bank to be used for parking to include dropped kerbs and to add grasscrete, this would be fully supported by the PC, BDC and SCC.

#### **Finance**

The finance report was accepted and can be found on the BPC website.

#### **Planning**

The full planning details can be seen in the minutes on the BPC website.

#### **Date of next meeting**

Tuesday 23rd June 2026 at 7pm in the village hall.

Parish council meetings are on the fourth Tuesday each month except in August and December. They are held in the village hall at 7pm. All are welcome to observe and there is a regular item to allow residents a short time to comment and raise items.

Full minutes and other documents mentioned above can be found at: <http://boxford-pc.gov.uk>

#### **Zoe Rumsey**

07304 361524

[clerk@boxford-pc.gov.uk](mailto:clerk@boxford-pc.gov.uk)

## NEWTON

### *Summary of Council Meeting 13<sup>th</sup> May 2026*

#### **26/081 Election of chairman**

Cllr Presland was unanimously elected as Chairman of Newton Parish Council (NPC) and signed the Declaration of Acceptance of Office before taking the chair.

#### **26/082 Election of vice chairman**

It was unanimously resolved that Cllr Schwenk be elected vice chairman of NPC.

#### **26/087 Representatives to outside bodies**

It was resolved that the following appointments be made:

1. Newton Green Trust: Cllrs Evers and Taylor
2. Village Hall Management Committee: Cllr Schwenk
3. Alston & Plampin Charity: Mrs S Presland, Mrs Liza Devlin and Mrs J Taylor

4. Cllr Major was appointed as the representative to the Suffolk Association of Local Councils (SALC).

#### **26/088 Internal auditor**

It was resolved that Heelis & Lodge be appointed as internal auditor for 2026/2027, and the clerk will send the letter of engagement.

#### **26/094 Planning**

The councillors reviewed planning application DC/26/01603 Perrywood Garden Centre, Newton Road - Change of use of existing store building to retail sales at existing garden centre site, with replacement of roller shutter door with glazed auto door, and resolved to support the application despite reservations on the impact that the increase in traffic will have on the capacity of the Perrywood junction with the A134.

#### **26/095 Saracens Head**

There has not been any further update on the sale of the Saracens Head, but the clerk was asked to contact the agent in June to see if there was any progress with the sale.

#### **26/098 Neighbourhood plan**

The councillors agreed with the draft housing questionnaire, prepared by the NP working party, which is to be circulated to residents in June 2026. The clerk will liaise with Cllr Evers who is a member of the NP working party, to finalise and print 300 copies of the questionnaire.

#### **26/099 Parish survey**

The councillors agreed that the annual parish survey should be added to the housing questionnaire, which will reduce the administration and distribution efforts for all concerned.

#### **26/103 Annual parish assembly**

The councillors discussed the issue raised at the APA regarding the bus shelters' cleanliness. They agreed that if councillors see any issues in this regard, they will update the clerk.

#### **26/104 Questions to the chair**

The poor condition of the "Tommie" used for the remembrance service was discussed. The councillors were extremely grateful that a replacement has been donated for this year's service. Cllr Schwenk raised the issue of a bus stop near Blacksmith Close, which the clerk will investigate.

Full minutes can be found at:

[www.newton-pc.gov.uk](http://www.newton-pc.gov.uk)

**Dave Crimmin CiLCA, PIALC, PSLCC**

01787 375085

[clerk@newton-pc.gov.uk](mailto:clerk@newton-pc.gov.uk)

# Boxford & District Bowls Club

We had our 'Opening of the Green' on Sunday afternoon, 19th April, and our President Andy Carr had the honour of bowling the first wood down the green. This officially started our new outdoor season, which runs from April to September. Huge thanks to our maintenance team and, in particular, Mike and Jerry - you all work so hard looking after the green throughout the year. It was in great condition and a delight to bowl on.



We had plenty of members playing in this friendly roll-up after the opening, and we finished the afternoon with tea, coffee and cake.

On 29th April, we organised a 'first in 50 years' match - Boxford Men v Ladies Friendly. It was a fun afternoon and the final score was 120 - 70 to the men. The men won on three rinks, the ladies won on one rink, and the three other rinks resulted in a draw. This is the first of future Boxford Men v Ladies competitions in years to come, I am sure.



Matches against other clubs and in other leagues have now begun, and it will be a very busy season for all our bowlers. Enjoy your bowling and good luck in all your matches.

*Roz Mortlock*

# Cricket News from Boxford

Great news - we have started the cricket season at the Boxford cricket square on the playing fields. The first match was held on 9th May between Sudbury 3rd XI and Long Melford 3rd XI, and the results are below.

There will be many more games this cricket season. The dates and teams playing are as follows:

**Friday 5th June, 6pm**

Sudbury Women vs Copdock Women

**Tuesday 23rd June, 6pm**

Sudbury Under 15s vs Witham;

**Sunday 28th June, 10am**

Sudbury Jnr Girls vs Halstead Jnr Girls;

**Saturdays 4th & 11th July, 1pm**

East Saxons

**Saturday 29th August, 12:30pm**

Sudbury vs Coggeshall

**Saturday 12th September, 12:30pm**

Sudbury vs Abberton

**News flash:** it has now been confirmed that members of the Edwardstone & Boxford Cricket Club will play a friendly match against East Saxons on **Saturday 27 June**, please all come and support our local team.

*Kevin Couling*

# Boxford Cricket Results

An early batting collapse at the top of their order did for Sudbury's third team on their seasonal reappearance at Boxford Playing Fields on 9th May. In the local derby fixture against Long Melford's seconds in Division 8A of the Two Counties League, the Sudbury side struggled from the start against the bowling of Budd (4-32) and Wade (2-11), falling to 48-6, despite

Sudbury's number three, Wooderson, applying himself valiantly as wickets fell around him. Fourteen-year-old George Shropshire demonstrated his potential with the bat, scoring 33 down the order and timing some finely struck shots when everyone else had struggled.

Sudbury's hopes of engineering a surprising defence of their total of just 102 were raised with a wicket in the first over of the Long Melford innings, with Bradbury having Pettitt lbw for 0. As it turned out, though, they weren't able to force the issue. Dangerous-looking spin from Wooderson and a lively late spell from another junior, Teo Jovanovic, suggested promising potency in the Sudbury attack, but that would be for another day, as Long Melford reached the required total in the 21st of 45 overs. Bourke (22) and Norris (24) were the most notable contributors to the score, before Hannah Chapple and Jason Wade saw the visitors home with six wickets still to fall.

The match, pictured below, was the first of a number of Sudbury games that will be hosted by Boxford this summer, including junior, girls' and women's senior fixtures. Sudbury's third eleven will be hoping for better form and more success on their next appearance at Boxford's ground.

*Charles Thomas*

*Captain of the Sudbury 3rd XI.*

A friendly match was played at Boxford on 16th May between East Saxons and Chelmsford. The weather was excellent, and the score was as follows: East Saxons scored 211 runs from 35 overs, with eight wickets lost. Chelmsford were all out for 90 runs.

The Chelmsford team have been playing three away matches, at Long Melford, Boxford and Chappel & Wakes Colne.

*Kevin Couling*



# Milden Cricket Club



After a closely-contested Bank Holiday Monday 35-overs-a side friendly on May 4th, won by 17 runs by touring side Superstars CC from London (scores: Superstars 202 for 6; Milden 185 for 2), Milden began their 2026 campaign in Division 5 of the Hunts County Bats League with a comprehensive 174 runs home win against Hadleigh on May 10th followed, a week later, by a 4-wickets defeat in a low-scoring match at Haverhill.

Alex Lomax, Milden's leading run-scorer in 2025, began the season where he left off with 53 (retired not out) in the friendly, and continued his good form with a century against Hadleigh, in which the highlight was a club record-breaking opening partnership of 211 between captain Alex 'Boris' Cunningham (79) and Lomax (111). Milden's final total of 286 for 5 was always going to be a tough target for the young Hadleigh side to chase, and they were bowled out for 112 in 30.2 overs. Wickets were shared and there were three run-outs, two by Oliver Barkham including a stunning direct hit from the boundary.

At Haverhill, after losing the toss and being asked to bat, Milden's innings was anchored by opener Steve Lucas, eventually dismissed for 39 with the score 107. Only Lomax (28) also posted double figures as Milden crawled to 112 for 9 - a target that Haverhill (113 for 6) reached with 19 overs to spare. As with last year's fixture, it was the spinners who took the wickets that did fall: Dave Willis 3 for 29 and Richard Robinson 3 for 40.



Photos from the Haverhill match. Top: Steve Lucas, who top-scored for Milden.

Above: Milden's Jonny Arnold takes a sharp catch to dismiss Jack Gair off Robinson's bowling.

## June fixtures:

7th June	Brockley v Milden
14th June	Milden v Woolpit
21st June	Nowton v Milden
28th June	Milden v Elmswell

David Lamming  
Media Officer

# MATTOCK MOTORS LTD

CALAIS STREET FARM, CALAIS STREET, BOXFORD



- TYRES
- BRAKES
- EXHAUSTS
- SERVICING
- MOT TESTS
- ONE STOP CAR REPAIRS

Has your Car lost  
it's Spark of Life?

Full Diagnostic Equipment, Laser Liner,  
Fault Code Reading Equipment.

(A.B.S., Airbag, Engine Management Lights etc)

- AIR CONDITIONING • REGASSING
- REPAIRS • ULTRA VIOLET LEAK DETECTION

OPENING TIMES MON-FRI 8:00am - 5:00pm

ONE CALL AWAY  
TELEPHONE

**01787 211394**



## Gary Jarvis

Paper Hanger and Interior Decorator

01787 211471 or 07733 325669

## Bates Wells & Braithwaite



Expert legal help for business and for individuals...

- Accident claims - Commercial and company law
- Commercial property - Commercial German legal services
- Employment - Environmental Law -
- Estates, trusts and wills - Family and children
- Farming and rural business affairs
- Health and safety - Licensing - Litigation/mediation
- Residential property - Rural business affairs

**Bates Wells & Braithwaite Solicitors**

27 Friars Street Sudbury C010 2AD

T: 01787 880440 E: solicitors@bwblegal.com

## Halls & Facilities to Hire

Boxford Pavilion	<i>Natalie Woods</i> <b>07772 916 135</b> <a href="mailto:nataliewoods25@gmail.com">nataliewoods25@gmail.com</a>
Boxford Spinney	<i>Mark Miller</i> <b>01787 211596</b> <a href="http://www.boxfordspinney.co.uk">www.boxfordspinney.co.uk</a> <a href="mailto:mark.miller@talktalk.net">mark.miller@talktalk.net</a>
Boxford Village Hall	<a href="http://www.boxfordvillagehall.co.uk">www.boxfordvillagehall.co.uk</a> <a href="mailto:booking@boxfordvillagehall.co.uk">booking@boxfordvillagehall.co.uk</a>
Brent Eleigh Village Hall	<i>Karen Marshall</i> <b>07946 209103</b> <a href="mailto:karenmarshall6@gmail.com">karenmarshall6@gmail.com</a>
Edwardstone Parish Hall	<i>Daphne Clark</i> <b>01787 210698</b> <a href="mailto:daphne.clark@btopenworld.com">daphne.clark@btopenworld.com</a>
Edwardstone Millennium Green	<i>Marijke Morris</i> <b>07914 767 013</b> <a href="mailto:marijke_e@yahoo.co.uk">marijke_e@yahoo.co.uk</a>
Groton Village Hall	<i>Joanna Roberts</i> <b>07845 940 008</b> <a href="mailto:jgant87618@aol.com">jgant87618@aol.com</a>
Lions Den Function Room The White Hart	<b>01787 211764</b>
Little Waldingfield Parish Room	<i>Sue Bowen</i> <b>01787 249473</b> <a href="mailto:sd.bowen@btopenworld.com">sd.bowen@btopenworld.com</a>
Little Waldingfield Pavilion	<i>Jennie Jordan</i> <b>07522 352 558</b> <a href="mailto:52Jennie1@gmail.com">52Jennie1@gmail.com</a>
Marquee Booking	<a href="mailto:BoxfordMarqueeBooking@gmail.com">BoxfordMarqueeBooking@gmail.com</a>
Milden Pavilion	<i>Justine</i> <b>07745 170 348</b> <a href="mailto:info@mildenspavilion.co.uk">info@mildenspavilion.co.uk</a>
Newton Village Hall	<i>The Secretary</i> <b>07955 199 000</b>

## Scouting

1st Boxford Beaver Scouts	<i>John</i> <b>07966 690317</b> <a href="mailto:johnaves@hotmail.co.uk">johnaves@hotmail.co.uk</a>
1st Boxford Cub Scouts	<i>Susie</i> <b>07843 280396</b>
1st Boxford Scouts	<i>David Talbot-Clarke</i> <b>07946 550519</b>
1st Boxford Explorer Scouts	<i>Neil Barkham</i> <b>07734 108257</b>
1st Boxford Rainbows	<i>Janice Macmillan</i> <b>07779 303690</b>
1st Boxford Brownies	<i>Janice Macmillan</i> <b>07779 303690</b> <a href="mailto:janice.macmillan@yahoo.co.uk">janice.macmillan@yahoo.co.uk</a>
1st Boxford Guides	<i>Bethany Ireland</i> <a href="mailto:bethanyireland11@gmail.com">bethanyireland11@gmail.com</a>

## Charities

Boxford & Groton United Charities	<i>Guy Godfray</i> <b>01787 211378</b>
Edwardstone Millennium Green Trust	<i>Alison Barlow</i> <b>07765 401 952</b> <a href="mailto:crossways.jemali@gmail.com">crossways.jemali@gmail.com</a>
Edwardstone Charities	<i>Nick Raymond</i> <b>01787 210461</b> <a href="mailto:ncraymond@hotmail.co.uk">ncraymond@hotmail.co.uk</a>
Groton Educational Foundation	<i>Kate Wilson</i> <b>01787 211658</b> <a href="mailto:kate.wilson100@hotmail.co.uk">kate.wilson100@hotmail.co.uk</a>
Groton Winthrop Mulberry Trust	<i>James Wills</i> <b>01787 210484</b>
Little Waldingfield Charities	<i>Mary Thorogood</i> <b>01787 247658</b> <a href="mailto:littlewalingfieldcharities@gmail.com">littlewalingfieldcharities@gmail.com</a>
Newton Green Trust	<i>Philip Taylor</i> <b>07775 777 598</b> <a href="mailto:philiptaylor433@gmail.com">philiptaylor433@gmail.com</a>

## Volunteers Make Our Villages Thrive

Our village halls, clubs, charities, and youth groups don't run themselves. Almost everything listed on these pages is organised by volunteers - neighbours giving a little time to keep things happening.

For anyone considering getting involved, help doesn't have to mean long-term or specialist commitment. Many groups need:

- occasional help at events
- someone to cover a role for a few months
- behind-the-scenes admin or publicity
- fresh faces with new ideas

Getting involved is one of the easiest ways to meet people and feel part of village life.

### *Additions or corrections*

This guide aims to be as complete and accurate as possible. If a group is missing, details have changed, or you spot an error, please email [editor@boxrivernews.com](mailto:editor@boxrivernews.com).

## Clubs & Groups

Boxford Bellringers	<i>Richard Gates</i> <b>01787 210432</b>
Boxford Bible Study Group	<i>Peter &amp; Margaret</i> <b>01787 211077</b>
Boxford Bike Club	<i>Kevin Bridge</i> <b>07876 798 617</b> <a href="http://www.boxfordbikeclub.co.uk">www.boxfordbikeclub.co.uk</a>
Boxford Bowls Club	<i>Ian Clark</i> <b>01787 211133</b>
Boxford Carpet Bowls	<i>David Warren</i> <b>01787 211067</b>
Boxford Drama Group	<i>Janice Macmillan</i> <b>07779 303 690</b> <a href="mailto:janice.macmillan@yahoo.co.uk">janice.macmillan@yahoo.co.uk</a>
Boxford Friendship Group	<i>Alison Warren</i> <b>01787 211067</b> or <i>Wendy Hills</i> <b>01787 210342</b>
Boxford Gardens Open	<i>Audrey Zuck</i> <b>07852 102 455</b> <a href="mailto:audrey@a2zriskservices.com">audrey@a2zriskservices.com</a>
Boxford Gardening Society	<i>Elizabeth Wagener</i> <b>01787 210223</b> <a href="mailto:elizabeth.wagener@btinternet.com">elizabeth.wagener@btinternet.com</a>
Boxford Karate Club	<i>Steve Harris</i> <b>07977 218 175</b> <a href="mailto:jkrksouthsuffolk@gmail.com">jkrksouthsuffolk@gmail.com</a> <a href="http://www.jkr-uk.org.uk">www.jkr-uk.org.uk</a>
Boxford Literary Group	<i>David Jones</i> <b>01787 211104</b> <a href="mailto:audav@hotmail.co.uk">audav@hotmail.co.uk</a>
Boxford Rovers Youth FC	<i>Melvyn Eke</i> <b>07873 971 701</b> <a href="mailto:m.eke@btinternet.com">m.eke@btinternet.com</a> <a href="http://www.boxford-rovers-youth.com">www.boxford-rovers-youth.com</a>
Boxford Tennis Social	<i>Sue Moore</i> <b>07808 481 447</b>
Boxford WI	<i>Lyn Beer</i> <b>07961 357 526</b>
Fleece Jazz	<i>David Gasson</i> <b>01787 210796</b>
Groton History Society	<i>Nigel Chapman</i> <a href="mailto:nigeljchap@gmail.com">nigeljchap@gmail.com</a>
Highway 12 Western Dance	<i>Chris</i> <b>01787 371006</b>
Little Waldingfield History Society	<i>Diana Langford</i> <b>01787 248298</b> <a href="mailto:dianalangford765@gmail.com">dianalangford765@gmail.com</a>
Little Waldingfield Over 60s & Friendship Club	<i>Tricia Eddington</i> <b>01787 247932</b>
Local History Recorders	<b>Edwardstone</b> <i>Daphne Clark</i> <b>01787 210698</b> <a href="mailto:daphne.clark@btopenworld.com">daphne.clark@btopenworld.com</a>
	<b>Groton</b> <i>Joanna Roberts</i> <b>01787 210619</b> <a href="mailto:jgant87618@aol.com">jgant87618@aol.com</a>
Madrigalia Choir	<i>Sue Price</i> <b>01787 210913</b>
Milden Cricket Club	<i>Richard Robinson</i> <b>07807 229447</b> or <i>David Lamming</i> <b>07968 791 135</b>
Milden Singers	<i>Pearl</i> <b>01449 741876</b>
Natural Boxford	<i>Louise Carpenter</i> <b>01787 211862</b> <a href="mailto:louisecarpenter@proton.me">louisecarpenter@proton.me</a>

## Clubs & Groups

Newton Arts & Crafts Club	<i>Carole Langley</i> <b>01787 373548</b>
Newton War Games Club	<i>Brian Lawson</i> <b>01787 312160</b>
Newton Fireside Club	<i>Moira Evans</i> <b>01787 374652</b>
Pilates (Edwardstone)	<i>Claire</i> <b>07772 074 750</b>
Primrose Wood Volunteers	<i>Evan Flockhart</i> <b>07968 336 883</b> <a href="mailto:obliquewoodland@protonmail.com">obliquewoodland@protonmail.com</a>
Swing Jive & Lindy Hop Dance	<i>Sarah Boldock</i> <b>07956 614 824</b>
Yoga (Boxford)	<i>Marianne Marshall</i> <b>01787 210323</b>
Yoga Paper Kite (Newton)	<i>Sophie</i> <b>01787 313662</b>
Yoga with Lindsey (Newton)	<i>Lindsey</i> <b>07971 800 540</b>

## Children Families & Learning

Boxford Primary School	<b>01787 210332</b> <a href="http://www.boxfordprimaryschool.co.uk">www.boxfordprimaryschool.co.uk</a> <a href="mailto:office@boxford.suffolk.sch.uk">office@boxford.suffolk.sch.uk</a>
Friends of Boxford School (FoBS)	<a href="mailto:talktofobs@gmail.com">talktofobs@gmail.com</a>
Sunflowers Childcare	<i>Moira Grant</i> <b>01787 211363</b> <a href="http://www.sunflowers-childcare.co.uk">www.sunflowers-childcare.co.uk</a> <a href="mailto:info@sunflowers-childcare.co.uk">info@sunflowers-childcare.co.uk</a>
Boxford Baby & Toddler Group	<a href="https://www.facebook.com/Boxfordbabyandtoddlergroup">facebook.com/Boxfordbabyandtoddlergroup</a>

## Community Groups

3PR Boxford 1st Responders	<i>Alistair Horne</i> <b>07887 716453</b> <a href="mailto:alistair.horne@eastamb.nhs.uk">alistair.horne@eastamb.nhs.uk</a>
Boxford Allotments	<i>David Burden</i> <b>01787 211926</b> <a href="mailto:d.burden379@btinternet.com">d.burden379@btinternet.com</a>
Boxford Bounty	<i>Mark Miller</i> <b>01787 211596</b>
Boxford Community Car Scheme	<i>Jen Eastwood</i> <b>01787 211853</b> <a href="mailto:jen.eastwood8@gmail.com">jen.eastwood8@gmail.com</a>
Boxford Community Council	<i>Ward Baker</i> <b>07850 941 831</b> <a href="mailto:boxfordcommunitycouncil@gmail.com">boxfordcommunitycouncil@gmail.com</a> <a href="http://www.boxford.me.uk">www.boxford.me.uk</a>
Boxford Playing Fields	<i>Craig Needham</i> <b>07970 733 934</b> <a href="mailto:craig.needham@me.com">craig.needham@me.com</a>
Boxford Society	<i>Jen Eastwood</i> <b>01787 211853</b> <a href="mailto:jen.eastwood8@gmail.com">jen.eastwood8@gmail.com</a> <a href="http://boxfordsuffolk.com/boxfordSociety">boxfordsuffolk.com/boxfordSociety</a>
Boxford Tennis Courts	<i>Nick Moore</i> <b>07977 241229</b>
Lt Waldingfield Playing Field	<i>Jennie Jordan</i> <b>07522 352 558</b> <a href="mailto:52Jennie1@gmail.com">52Jennie1@gmail.com</a>

## MAY 2026

<b>29</b> FRI	<b>Little Waldingfield Pop-Up Pub</b> Little Waldingfield Pavilion	6:30pm
------------------	---	--------

## JUNE 2026

<b>2</b> TUE	<b>Boxford Gardening Society</b> Boxford Village Hall	7:30pm
<b>3</b> WED	<b>Polstead Community Natter</b> Polstead Village Hall	10:30-12:30pm
<b>3</b> WED	<b>Boxford WI - 20th Birthday Celebration</b> Boxford Village Hall	2pm
<b>6</b> SAT	<b>1st Boxford Scout Council AGM</b> Boxford Spinney CO10 5HL	3pm
<b>6</b> SAT	<b>Bingo!</b> Polstead Village Hall	6:30pm
<b>6</b> SAT	<b>Musicology Concert</b> Edwardstone Church	7pm
<b>7</b> SUN	<b>Boxford Open Gardens</b> Boxford & Edwardstone	11-4pm
<b>9</b> TUE	<b>Fireside Club - Trip to Markshall</b> Newton Village Hall	2pm
<b>11</b> THU	<b>CPR &amp; AED Awareness Course</b> The Fleece, Boxford	7pm
<b>12</b> FRI	<b>Polstead Films - H is for Hawk</b> Polstead Village Hall	7pm
<b>12</b> FRI	<b>Boxford Society Old Picture Show Pt 2</b> Boxford Village Hall	7:30pm
<b>13</b> SAT	<b>Taste of East Anglia</b> Kentwell Hall, CO10 9BA	10-5pm
<b>13</b> SAT	<b>Boxford Bowls Club Cake Sale</b> Bowling Green, Behind The Fleece	12:30pm
<b>13</b> SAT	<b>FoBS Gone Barking Dog Show</b> Boxford Primary School	12:30pm
<b>14</b> SUN	<b>Groton VH Centenary Celebration</b> Groton Village Hall	3-5pm
<b>17</b> WED	<b>LWHS: Military History of Orford Ness</b> Little Waldingfield Parish Room	7:30pm
<b>17</b> WED	<b>Ladies Get Into Golf</b> Newton Green Golf Club	1pm
<b>17</b> WED	<b>Charity Quiz Night</b> The Fleece, Boxford	8pm
<b>19</b> FRI	<b>Rural Coffee Caravan</b> Polstead Village Green	10-12noon
<b>20</b> SAT	<b>Newton Trust Coffee Morning</b> Newton Village Hall	10am
<b>20</b> SAT	<b>Ladies Get Into Golf</b> Newton Green Golf Club	11am

## JUNE 2026

<b>21</b> SUN	<b>Little Waldingfield Open Gardens</b> Little Waldingfield	11-4pm
<b>21</b> SUN	<b>Nedging Vintage Fete</b> Nedging Hall	12-4:30pm
<b>22</b> MON	<b>Boxford Friendship Group</b> Boxford Village Hall	2-4pm
<b>23</b> TUE	<b>Fireside Club - Afternoon Tea</b> Painters Sudbury	2pm
<b>24</b> WED	<b>Boxford Spinney AGM</b> Boxford Spinney CO10 5HL	7:30pm
<b>26</b> FRI	<b>Little Waldingfield Pop-Up Pub</b> Little Waldingfield Pavilion	6:30pm
<b>26</b> FRI	<b>GHS: Victoria &amp; Abdul</b> Groton Village Hall	7:30pm
<b>27</b> SAT	<b>Tom Cogan Organ Concert</b> St Mary's, Boxford	6-7pm
<b>28</b> SUN	<b>Chelsworth Open Gardens</b> Chelsworth	11-5pm
<b>30</b> TUE	<b>Natural Boxford Swift Walk</b> Bottom of the Croft, Boxford	8pm

## JULY 2026

<b>1</b> WED	<b>Boxford WI - Speaker from Giggly Pig</b> Boxford Village Hall	2pm
<b>3</b> FRI	<b>Madrigalia &amp; A Melody of Harps</b> Bury St Edmunds Cathedral	1:10pm
<b>4-5</b> SAT-SUN	<b>Fine Art Exhibition</b> St Peter's Church, Milden	10:30-4:30pm
<b>4</b> SAT	<b>Leavenheath Fete</b> Leavenheath Village Green	12-5pm
<b>4</b> SAT	<b>Tea Dance</b> Boxford Village Hall	3-5pm
<b>4</b> SAT	<b>Quiz Night</b> Little Waldingfield Parish Room	7:30pm
<b>7</b> TUE	<b>Boxford Gardening Society</b> Boxford Village Hall	7:30pm
<b>15</b> WED	<b>Charity Quiz Night</b> The Fleece, Boxford	8pm
<b>18</b> SAT	<b>Fireside Club - Coffee Morning</b> Newton Village Hall	10am
<b>24</b> FRI	<b>Macbeth with The Handlebards</b> Tendring Hall Estate, Stoke-by-Nayland	7pm
<b>24</b> FRI	<b>Boxford Drama Group Quiz Night</b> Boxford Village Hall	7pm
<b>27</b> MON	<b>Boxford Friendship Group</b> Boxford Village Hall	2-4pm

**A Tennent Electrical**  
 Quality Electrics for Domestic, Commercial and Industrial properties  
 Small jobs to complete re-wires

For a free estimate  
 call Adrian on: **07968 856 765**  
 e.mail: [adrian.tennent@btinternet.com](mailto:adrian.tennent@btinternet.com)  
 1 Church Street, Boxford, Sudbury



**Little Gems**  
 CLEANING COMPANY

07984594538  
[boxfordgems@gmail.com](mailto:boxfordgems@gmail.com)

RESIDENTIAL COMMERCIAL

Small rooms, Big ideas.  
 Professional cleaning with a personal touch.

**HEDGEROW MANAGEMENT**  
 Hedgelaying, Coppicing and Native Planting



Agricultural and Domestic

Traditional management for gappy or overstood hedges  
 Work completed to DEFRA grant schemes standard at competitive rates

**Joe Robson, Lavenham**  
 ☎ 07846 944 582 ✉ [joe.sutcliffe9@hotmail.co.uk](mailto:joe.sutcliffe9@hotmail.co.uk)

**Seasoned Firewood & Woodchip**  
 For Sale By the load

**01787 319200**



We carry out all aspects of tree works

**SUFFOLK TREE SERVICES**  
[www.suffolktreeservices.co.uk](http://www.suffolktreeservices.co.uk)

**N D Rose**  
 Int/Ext Decorating

- Gutters Cleaned/Repaired/Replaced
- Wall/Floor Tiling
- General Building Maintenance

Telephone 01787 211042  
 Mobile 07518 040 465  
 3 Fen Street, Boxford, CO10 5HL

**BILL PLANT DRIVING SCHOOL**

National Driving School winner 2023 & 2024  
 National Experience, Local Knowledge  
 Learn to drive with the UK's No. 1 Driving School  
 Covering Sudbury, Hadleigh, Bury St Edmunds, Ipswich, Colchester and surrounding villages

[www.billplant.co.uk/learn](http://www.billplant.co.uk/learn) ☎ 0330 555 2254

**JB AUTOWERX** AUTOMOTIVE SECURITY SOLUTIONS

MOBILE FITTING IN SUFFOLK

CONTACT JAMES ON  
 01473 675140  
 07749 192947

[INFO@JBAUTOWERX.COM](http://INFO@JBAUTOWERX.COM)  
[WWW.JBAUTOWERX.COM](http://WWW.JBAUTOWERX.COM)

- THATCHAM APPROVED TRACKERS & IMMOBILISERS
- VAN ALARMS
- MOTORHOME & CARAVAN SECURITY
- DASHCAMS
- APPLE/ANDROID CARPLAY

**Darren Howe - Qualified Carpenter & Joiner**  
 All Aspects of Carpentry Undertaken

- Handmade Kitchens & Fitted Wardrobes
- Fitted Kitchens
- Doors Made and Hung
- Floors & Laminates
- Balustrading, Decking and much more

Call me for a free No Obligation Quotation  
 on 07795 345466 or email me at [howies@hotmail.co.uk](mailto:howies@hotmail.co.uk)

**TRACEY PARR**  
 Independent Travel Agent

**07747 608 509**

[tracey@boxrivertravelboutique.co.uk](mailto:tracey@boxrivertravelboutique.co.uk)






**Kirkham Sheidow Architects**



Boxford 01787 211670  
[design@kirkhamsheidow.co.uk](mailto:design@kirkhamsheidow.co.uk)  
[www.kirkhamsheidow.co.uk](http://www.kirkhamsheidow.co.uk)

**BUSINESS OWNER?**  
 WHY AREN'T YOU IN THE  
 BOX RIVER NEWS DIRECTORY?

01787 210946  
[editor@boxrivernews.com](mailto:editor@boxrivernews.com)

**-PJH-**  
 Property Maintenance

Quality Painting and Decorating  
 Interior & Exterior,  
 Tiling and General Maintenance,  
 Carpentry

[www.pjhpropertymaintenance.co.uk](http://www.pjhpropertymaintenance.co.uk)  
[pjhpropertymaintenance337@gmail.com](mailto:pjhpropertymaintenance337@gmail.com)

6 Hadleigh Road, Boxford,  
 Sudbury CO10 5JH

**TELEPHONE: 01787 212366**

**Green Eye Gardens**  
 Garden design, creative planting & landscaping



**Francesca Green**  
 Tel: (01787) 210507 / 07768 960 402

[www.greeneyegardendesign.co.uk](http://www.greeneyegardendesign.co.uk)  
[info@greeneyegardendesign.co.uk](mailto:info@greeneyegardendesign.co.uk)

**JPS Timber**



Suppliers of:

- New and Reclaimed Sleepers
- Reclaimed Scaffold Boards
- Carcassing Timber
- Decking
- Post and Rail Fencing
- Oak Barrels and Planters and more....

**07970 559 251**

[mail@jpstimber.co.uk](mailto:mail@jpstimber.co.uk)  
[www.jpstimber.co.uk](http://www.jpstimber.co.uk)

**Bed & Breakfast**  
**Newmans Hall Farm**  
[www.newmanshall.co.uk](http://www.newmanshall.co.uk)

- \* All rooms en-suite
- \* Heated indoor swimming pool
- \* Ample off-road parking
- \* Quiet rural setting
- \* No smoking policy
- \* Spacious grounds

Monks Eleigh Road  
 Little Waldingfield  
 Sudbury, Suffolk  
 CO10 0SY

Telephone: 01787 249111  
 Charles mobile: 07850 210256  
 Louise mobile: 07887 540432

email: [louise@newmanshall.co.uk](mailto:louise@newmanshall.co.uk)

**Cass White Upholstery**  
 Traditional & Modern



[www.casswhiteupholstery.com](http://www.casswhiteupholstery.com)

07759 924 209  
[casswhite@live.com](mailto:casswhite@live.com)

## DCM ELECTRICS

Working and testing for electrical safety

Highest quality electrical service  
with 40 years experience

DAREN: 07951 990327  
DAREN.DCM@GMAIL.COM

3 Castlings Heath, Groton, CO10 5EU



Your Local Insurance Broker Is  
Here For You

**Coversure Sudbury**

CALL US: 01787 374 857

VISIT US: [coversure.co.uk/sudbury](http://coversure.co.uk/sudbury)

We can offer you insurance cover  
for  
Business, Property, Home & Motor

For business. For family. For you.

## Deeks Bespoke

Kitchens and Bedrooms

tel: 07969 524 124

email: [deeksbespoke@gmail.com](mailto:deeksbespoke@gmail.com)



## OPTIMUM

Architecture Ltd

**Architectural Services**

Including Listed and Low

Energy Buildings

**01206 262697**



[www.optimum-architecture.co.uk](http://www.optimum-architecture.co.uk)

## Qualified Foot Health Professional

Bridget Clifford MCFHP MAFHP  
Foot Care in the comfort of your own home.

**Tel: 01787 211345**

If unavailable leave a message  
and your call will be returned.

## ROBSON THATCHING

FREE ADVICE  
RE-THATCHES  
PATCHING  
REPAIRS

Over 25 years experience

Lavenham

**07443 596 757**

[philiprobson2011@hotmail.co.uk](mailto:philiprobson2011@hotmail.co.uk)

## PADDOCK AND MEADOW CUTTING & HARROWING SERVICE

Small Tractor 6' Topper  
12' Grass Harrow

**01787 210842**

## BUSINESS OWNER?

WHY AREN'T YOU IN THE  
BOX RIVER NEWS DIRECTORY?

01787 210946

[editor@boxrivernews.com](mailto:editor@boxrivernews.com)



Over 30 years of experience specialising in  
custom solutions for all of your  
plumbing & heating requirements

- Gas & Oil Central Heating
- Annual Boiler Servicing
- Bathroom Design & Installation
- Underfloor Heating
- Energy Efficient Systems
- Air Source Heat Pump Installations

☎ 07970 163 084 📞 01787 249 081

✉ [scott.hurrell@btinternet.com](mailto:scott.hurrell@btinternet.com)

🌐 [www.sjhurrell.co.uk](http://www.sjhurrell.co.uk)



## C D Lawson

Building & Hard Landscaping  
01787 211429 mobile: 07730885019

- All Building work •
- Maintenance •
- Alterations • Extensions •
- Driveways • Drainage •
- Patios • Fences etc. •

Professional and Reliable service  
at competitive rates

13 Boxford Lane, Boxford, CO10 5JU  
email: [lawsoncdian@btinternet.com](mailto:lawsoncdian@btinternet.com)



24 HOUR  
TELEPHONE SERVICE  
**01787 248282 & 01787 248147**

Norman Way, High Street, Lavenham,  
Sudbury, Suffolk CO10 9PY

INDEPENDENT FAMILY COMPANY



ESTABLISHED 1952

## Ken Grime & Son Ltd Electrical Contractors

Fully Qualified and part P Registered  
All types of electrical works undertaken  
No job too small • Very competitive prices

Office Tel: **01787 373 558**

Ken Mobile: **07702 358 802**

109 Bures Road • Great Cornard • Suffolk • CO10 0JE

## D MAY

### Plumbing & Heating

Offering a fully comprehensive range of domestic plumbing and heating services.  
Local tradesman 30 years experience  
Free estimates not VAT registered.  
New bathroom and ensuite installations including floor/wall tiling.  
Emergency service provided and no job too small.  
Tel: **01473 829064** or  
Mobile: **07886 389 995**

## S B Electrical

For all your electrical work

⚡ large or small ⚡

Free Estimates  A Member of NAPIT®   
Electrical Certificates Issued   
Part 'P' Registered  Insurance Backed Guarantee

**Tel: 01787 247043**

email: [info@sbelectrical.biz](mailto:info@sbelectrical.biz) or visit [www.sbelectrical.biz](http://www.sbelectrical.biz)

## Boxford Lane Joinery

With the benefit of over 40 Years experience

Specialist Manufacturers  
and Installers of Bespoke:

*Kitchens*

*Wardrobes and Household Furniture*

*Staircases • Architectural Joinery*

*Windows, Doors and Conservatories.*

*All finished/Sprayed/Polished*

*in House if required.*

*A full fitting and Carpentry service  
is also available.*

**Contact: Greg Deeks: 01206 263525**

**or mobile: 07977 738 649**

**or Brett Deeks: 07969 524 124**

email: [BoxfordLaneJoinery@gmail.com](mailto:BoxfordLaneJoinery@gmail.com)

## SAM'S K9 Services

Experienced dog walker and trainer, good rate, fully insured, qualified and have my first aid for dogs.

Not only am I a dog walker but I'm also a qualified dog trainer. I'm able to help with a wide range of behavioural and training issues.

My methods of training are up to date and force free.

Whether you need help as a first time puppy owner, or your dog is showing signs of aggression or you need help with training problems such as lead pulling

**please call me on 07939 563 282**

## BETTER BY FARR

Painting & Decorating Property Services

For a free quote contact:

**James Farr**

**[BetterByFarr@hotmail.com](mailto:BetterByFarr@hotmail.com)**

**07539 796 344**

## FIREWOOD

**BARN STORED DRY LOGS  
VARIOUS LOAD SIZES AVAILABLE**

**OR KILN DRIED LOG NETS  
AT £15 EACH**

Delivery available on minimum of 6 nets

## KINDLING

Contact Carol Abbot  
**01473 829 130** or  
mobile **07768 795 981**



## KJ Garden & Home Services

Gardening, Landscaping and  
General Household & Garden Repairs

General Gardening & Mowing  
Landscaping & Carpentry  
Decking & Pergolas  
Garden & Household Repairs  
Painting & Decorating

Fully Insured No job too small

✉ [karlandjoshservices@gmail.com](mailto:karlandjoshservices@gmail.com)  
☎ **07787 241425**



## COMMAND PEST CONTROL

Established 1986

Locally based, professional Pest Control company.  
Offering complete solutions for:

- Rats ➢ Mice ➢ Wasps ➢ Ants
- Moles ➢ Woodworm ➢ Fleas
- Rabbits ➢ Feral Pigeons ➢ Squirrels

All enquiries welcome from one off pest problems,  
to servicing contracts for year round protection.

**Call (01787) 248049**  
[www.commandpestcontrol.co.uk](http://www.commandpestcontrol.co.uk)

## M.D.MILLS

(BUILDING CONTRACTORS) LTD

All types of building work undertaken including:

Extensions, Renovations  
Insurance Repair Works,  
Plumbing & Heating, Electrics,  
Roofing, Tiling, Decoration, etc

For a free no obligation estimate  
please call:

**01787 373085**  
[www.mdmills.co.uk](http://www.mdmills.co.uk)

## BUSINESS OWNER?

WHY AREN'T YOU IN THE  
BOX RIVER NEWS DIRECTORY?

**01787 210946**

[editor@boxrivernews.com](mailto:editor@boxrivernews.com)

## Hadleigh Hairloom

78 - 80 High Street, Hadleigh  
**01473 822191**

Walk-in Family Salon

Catering to the entire family's hairdressing needs

\* Easy Access \* Family Friendly \* Free Wi-Fi \*  
Comfortable Waiting Area with Toys and TV.

Monday Wednesday & Friday: 9 - 5.30

Tuesday 9 - 7.00 \* Thursday 9 - 8.00 \*

Saturday 8.30 - 4.00

## WHITWELL SERVICES

For all your  
Home Heating & Plumbing Needs

Established in 1979  
Oil Boiler Servicing, Repair & Installation,  
Oil Tank Fitting,  
Renewable Energy Installation  
Gas Safety Registered.

We offer a unique  
Design & Installation service for  
Bathrooms, Kitchens, Renovations and  
New Build Projects.

To Contact us:

Tel: **01787 210277**

Email: [enquiries@whitwellservices.co.uk](mailto:enquiries@whitwellservices.co.uk)

Web: [www.whitwellservices.co.uk](http://www.whitwellservices.co.uk)

**LAWNS FIELDS AND GARDENS**  
Established 1991



All types of Grasscutting undertaken •  
• Commercial and Domestic •  
• Contract or otherwise •  
• Grounds Maintenance •  
• Hedges • Trees • Fencing • Patios •  
• Drives • Pergodas •

**FOR A FREE QUOTE RING MARTIN ON  
07932 477152**

**Scents Of Life** 

Essential Oil support  
for all areas of health

*Louise Carpenter*  
*whole being well being*

Transformative Sound Immersions  
Fully qualified healing practitioner

[louisecarpenter@proton.me](mailto:louisecarpenter@proton.me)  
01787 211862

  
**DANNI NELSON™  
— EARCARE —**

Local, Independent Ear Cleansing  
in the Comfort of Your Home

You check your eyes, teeth & general health...  
don't forget your ears.

- ✓ Microsuction – safe, effective removal (gold-standard method)
- ✓ Ear syringing available where clinically appropriate
- ✓ Ear health assessments for reassurance & peace of mind
- ✓ I come to you – no travel needed
- ✓ Fully registered, DBS checked & insured

Call/WhatsApp Danielle: **07514 030173**  
✉ [info@danniearcare.co.uk](mailto:info@danniearcare.co.uk)  
🌐 [www.danniearcare.co.uk](http://www.danniearcare.co.uk)

**CARPETS - VINYLs - WOOD  
LIONEL HATCH FLOORS**

Your local professional,  
personal, competitively priced  
flooring service

Call Lionel Today

T: 01787 374163 M: 07766 026 875  
Email: [lionelhatchfloors@gmail.com](mailto:lionelhatchfloors@gmail.com)

 **PAUL MACHIN  
GARDEN SERVICES** 

All aspects of Garden and  
Ground maintenance undertaken  
Residential and Commercial Grass cutting  
Please contact me to discuss your requirements

**07854 725777**  
[paulsgmh@gmail.com](mailto:paulsgmh@gmail.com)  
@paulmachin gardenservices

 *Andy Morgan*  
**Painter & Decorator**  
**S.E.P. Painters**

Tel 01787 375824 • Mobile 07748 800701  
[andy@seppainters.co.uk](mailto:andy@seppainters.co.uk)

For all your interior and exterior decorating...  
...from New Build to Period Properties  
Your satisfaction is my speciality!

[www.seppainters.co.uk](http://www.seppainters.co.uk)

**BUSINESS OWNER?**  
WHY AREN'T YOU IN THE  
BOX RIVER NEWS DIRECTORY?

**01787 210946**  
[editor@boxrivernews.com](mailto:editor@boxrivernews.com)

**Antique Renovations** 

Expert restorers of  
fine antiques & interior woodwork



UNIT 1, BRIDGE FARM  
LAVENHAM ROAD, BRENT ELEIGH, CO10 9PB  
Tel: 01787 248 511

  
**LOUISE'S**  
*Mobile Hairdressing*

I am an experienced,  
professionally trained hairdresser  
& will visit you in the comfort  
of your own home.

Full colours, highlights, cut & blow-dry  
Prom & wedding packages available  
Ladies, gents & children

Please call Louise to book an  
appointment  
**07970 704 823**

  
  
**Blake Tree Care**  
Your trees, our expertise

Tree Surgery  
Hedge Cutting & Maintenance  
Site Clearance & Reclamation  
Stump Removal  
Emergency Call Outs

Office: 01787 228841  
Perry: 07488 361717  
George: 07515 288736  
[info@blaketreecare.co.uk](mailto:info@blaketreecare.co.uk)  
[www.blaketreecare.co.uk](http://www.blaketreecare.co.uk)

**GARDEN WORK**  
TREES & HEDGES

Call for a quote  
G.J. & C.A. Abbott

**01473 829130 or  
mobile 07768 795981**

**H Byham & Son Ltd**  
**Ballingdon Dairy, Sudbury**

Deliveries of Dairy Produce and Goods  
to Boxford and  
Surrounding Villages


**Tel: 01787 372526**

**Suffolk Medical &  
Beauty Clinic**

All Beauty Therapy Treatments  
Laser Permanent Hair Removal  
Anti - Wrinkle Injections  
Thread vein treatment  
Skin Rejuvenation  
Dermal Fillers  
Mole and Skin Checks  
Dermaroller/Pen  
Medical Microdermabrasion  
Semi permanent make-up




[www.suffolkmedicalclinic.co.uk](http://www.suffolkmedicalclinic.co.uk)  
6 Broad Street, Boxford  
**01787 211000**



**FORMERLY 'NAILS BY GRACE'**

I'm Grace Crimmin, a fully qualified Beauty Therapist with over 12 years' experience in Salons and Spas. I offer a wide variety of treatments from my treatment room in Newton, including Body Massages, Facials, Manicures, Pedicures, Waxing and more! I look forward to hearing from you.

[www.beauty-bygrace.co.uk](http://www.beauty-bygrace.co.uk)  
 07484 648932



**WALNUT PLUMBING SERVICES**  
 Your local, friendly heating & plumbing company 

A full range of domestic plumbing needs provided, including:

- Gas boiler services
- Gas boiler breakdown & repairs
- Gas boiler installations

Free quotes available and emergency call outs  
 Colin Humphreys: **07894 433 167**  
[walnutplumbingservices@gmail.com](mailto:walnutplumbingservices@gmail.com)



**STIRLING PAINTERS & DECORATORS**

THIS FATHER AND SON TEAM BETWEEN THEM HAVE 60 YEARS EXPERIENCE IN THE TRADE, WOULD LIKE TO GIVE YOU A FREE ESTIMATE FOR EXTERNAL AND INTERNAL REDECORATION OF YOUR PROPERTY WE DO NOT USE SUB-CONTRACT LABOUR WE ONLY USE THE BEST MATERIALS WE TREAT YOUR PROPERTY AS IF IT WAS OUR OWN WE ARE PROFESSIONALS


**TEL: 01255 688104**  
**MOBILE: 07866 734519**

**AK SMITH PLASTERING**  
*Established 1986*

CEILING, WALLS, FLOORS  
 LIME PLASTERING  
 PLASTER BOARDING, COVING

**NO JOB TOO SMALL**

MOBILE: **07808 027 116**  
*Based in Assington*

  
 Email: [aksmithplastering@hotmail.co.uk](mailto:aksmithplastering@hotmail.co.uk)  
 Web: [www.aksmithplastering.com](http://www.aksmithplastering.com)

**HOWARD WATTS Automotive**



Sales, MOT and Service at Riddelsdell Bros Ltd (Est 1900)  
 ELLIS STREET, BOXFORD, CO10 5HH

**01787 210318**  
**07836 353537**  
[www.howardwatts.co.uk](http://www.howardwatts.co.uk)  
[office@howardwatts.co.uk](mailto:office@howardwatts.co.uk)



**Boxstore**  
 Domestic & Business Storage

**Need more space?**  
 Various size storage units available now



 **01787 210350**  
 [info@boxstore.co.uk](mailto:info@boxstore.co.uk)  
 [www.boxstore.co.uk](http://www.boxstore.co.uk)  
 Siam Hall, Boxford, CO10 5LA

**BUSINESS OWNER?**  
 WHY AREN'T YOU IN THE BOX RIVER NEWS DIRECTORY?

**01787 210946**  
[editor@boxrivernews.com](mailto:editor@boxrivernews.com)

**P.D. Garner**  
 Plastering Services

Telephone: **01206 262207**  
 Mobile: **07976 246713**

13 Elmtree Lane, Leavenheath, Colchester CO6 4UL

**Colne Valley Windows**  
 Your local double glazing company

Windows • Doors • Conservatories  
 Bi-Folding Doors • Soffits • Facias and Guttering • uPVC and Aluminium • Shop Fronts • Manual and Automatic Entrances and much more!!

Transferable 10 Year Insurance  
 Backed Guarantee  
 Over 30 Years Experience  
 Free Quotation  
 Local Family Run Business



**To arrange a free quotation please call us on 01787 827382**

Web: [www.colnevalleywindows.co.uk](http://www.colnevalleywindows.co.uk)  
 Email: [info@colnevalleywindows.co.uk](mailto:info@colnevalleywindows.co.uk)  
 Certified Company 36650

**Nº 18 HONEY**

**LOCAL SUFFOLK HONEY**

100% pure honey, straight from hive to jar.  
 Made by our happy bees from local wildflowers right here in Boxford. Available to buy online or direct from the driveway, cash and card payments accepted.

BBKA-registered swarm collectors

**18 STONE ST. BOXFORD CO10 5NR**  
**01787 210 946 / 07919 902 437**  
[www.numbereighteensuffolk.com](http://www.numbereighteensuffolk.com)  
[buzz@numbereighteensuffolk.com](mailto:buzz@numbereighteensuffolk.com)



**MINIWASTE LIMITED**

**2, 3, 4, 6, 8, 10 & 12 YARD SKIPS FOR HIRE**  
**16, 20 & 40 YARD RO/RO FOR HIRE**

Tel: **01787 378811**  
 e mail: [info@miniwaste.co.uk](mailto:info@miniwaste.co.uk)  
 Website: [www.miniwaste.co.uk](http://www.miniwaste.co.uk)

www.weloveconcerts.com  
Box Office: 07879—208141

Full Information  
Ticket Booking

www.weloveconcerts.com  
Box Office: 07879—208141

## Lavenham Village Hall, Suffolk

### Ultimate ELO

The ELO Live Experience  
Fri 5th Jun 8.00pm



An evening of  
hits & Classic Album tracks

### The Jersey Boys by The Ragdolls

Sat 6th Jun 2.15pm



A vibrant matinee  
bursting with timeless hits.

### SHAKATAK

Sat 6th Jun 7.30pm



jazz-funk legends  
delivering their signature  
blend of silky grooves

## Historic Lavenham Annual August Festival Theatre

### A FOREIGNERS JOURNEY

Fri 7th Aug 7.30pm

Exclusive Afternoon Matinee

### RUSSELL WATSON

& Guests

Sat 8th Aug 1.30pm

### THE BAY CITY ROLLERS

Sat 8th Aug 7.30pm

An Afternoon of Classic YES with  
**YES PLEASE**

Sun 9th Aug 1.30pm

### ROXY MAGIC

Sun 9th Aug 7.30pm

### THE CARPENTERS EXPERIENCE

Thu 13th Aug 1.30pm

**HOLDING BACK THE YEARS**  
**SIMPLY RED**

Thu 13th Aug 7.30pm

NEW ON  
SALE

### KARNATKA

Fri 14th Aug 1.30pm

### GENESIS CONNECTED

Fri 14th Aug 7.30pm

### THE SHIRES & Guest Star

Sat 15th Aug 1.30pm

LIMITED  
TICKETS

### DAVID ESSEX & His Band

Sat 15th Aug 7.30pm

Greatest Hits Concert

LAST FEW  
TICKETS

An Afternoon With

### COLLABRO

Sun 16th Aug 1.30pm

West End Voices, boyband soul

LIMITED  
TICKETS

### T.REXTASY UNPLUGGED

+SPECIAL GUEST ACOUSTIC BOWIE

Sun 16th Aug 7.30pm